

WINCH ASSEMBLY

GROUP UA
TITLE WINCH ASSEMBLY

ITEM NO	DESIGNATION	NSN MANUFACTURER CODE/PART NO SUPPLIER CODE/PART NO	NO OFF	U O	E X	U* F* B*
001	WINCH, DRUM, VEHICLE MOUNTING, T8000M, HEAVY DUTY, 39 :1 RATIO, C/W CABLE ASSEMBLY (INCLUDES UA 002 TO UA 021, UA 023, UA 9002 TO UA 057 AND UAA 007)	2590 66-130-4838 Z0096/AYG8183 /NIL	1			FB
002	HANDLE, 90 DEG. BEND, 160 BY 160 MM, 19 MM DIA., MILD STEEL	Z4820/T55 Z0096/HYL8725	1			
003	PIN, SPRING, 1.25 IN. LG BY 0.25 IN. OD	5315 66-128-5101 Z4820/T57 Z0095/HYL8726	1			UFB
004	FITTING, LUBRICATION, STRAIGHT, 0.25 IN. THD DIA, 28 TPI, 0.275 IN. W A/F	4730 66-128-5100 Z4820/T69 Z0096/HYL8727	1			UFB
005	FITTING, LUBRICATION, 90 DEGANGLE, 0.25 IN. THD DIA, 28 TPI, 0.275 IN. W A/F	4730 66-128-5102 Z4820/T358 Z0096/HYL8728	1			UFB
006	HOUSING, CLUTCH ASSEMBLY, WINCH, CAST ALUMINIUM	Z4820/T2492 Z0096/HYL8729	1			
007	BUSH, BRONZE, 1.25 IN. I.D., 1.5 IN. O.D., 1.875 IN. FLANGE DIA., 1.25 IN. LENGTH, 0.094 IN. FLANGE WIDTH	Z4820/T65 Z0096/HYL8730	4			
008	FORK, SLIDING CLUTCH, STEEL	Z4820/T56 Z0096/HYL8731	1			
009	KEY, WINCH DRIVE SHAFT, STEEL, 0.3 IN. WIDTH, 0.25 IN. HEIGHT, 1.86 IN. LENGTH	Z4820/T72 Z0096/HYL8732	2			
010	CLUTCH, SLIDING, CAST STEEL	Z4820/T454 Z0096/HYL8733	1			
011	SPACER, STEEL	Z4820/T2799 Z0096/HYL8734	1			
012	SCREW, GRUB, 3/16 IN. INTERNAL HEX. DRIVE, 3/8 IN. UNC THREAD, 1/2 IN. LENGTH, 16 T.P.I.	Z4820/T93 Z0096/HYL8735	1			

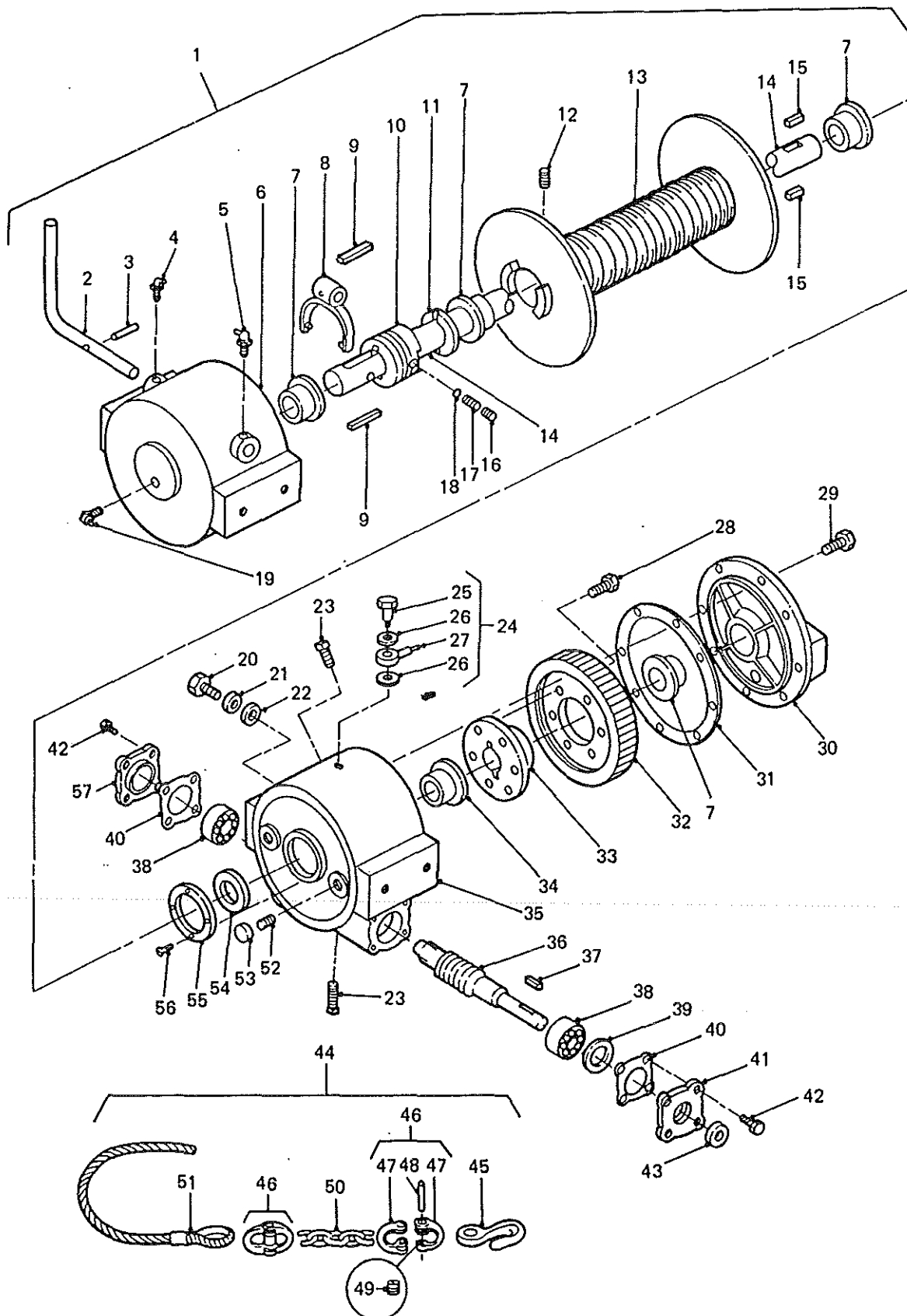
ISSUE NO: 2

REPAIR PARTS SCALE : 02189

PAGE NO:

386

* LEVEL OF REPAIR (UNIT FIELD OR BASE)

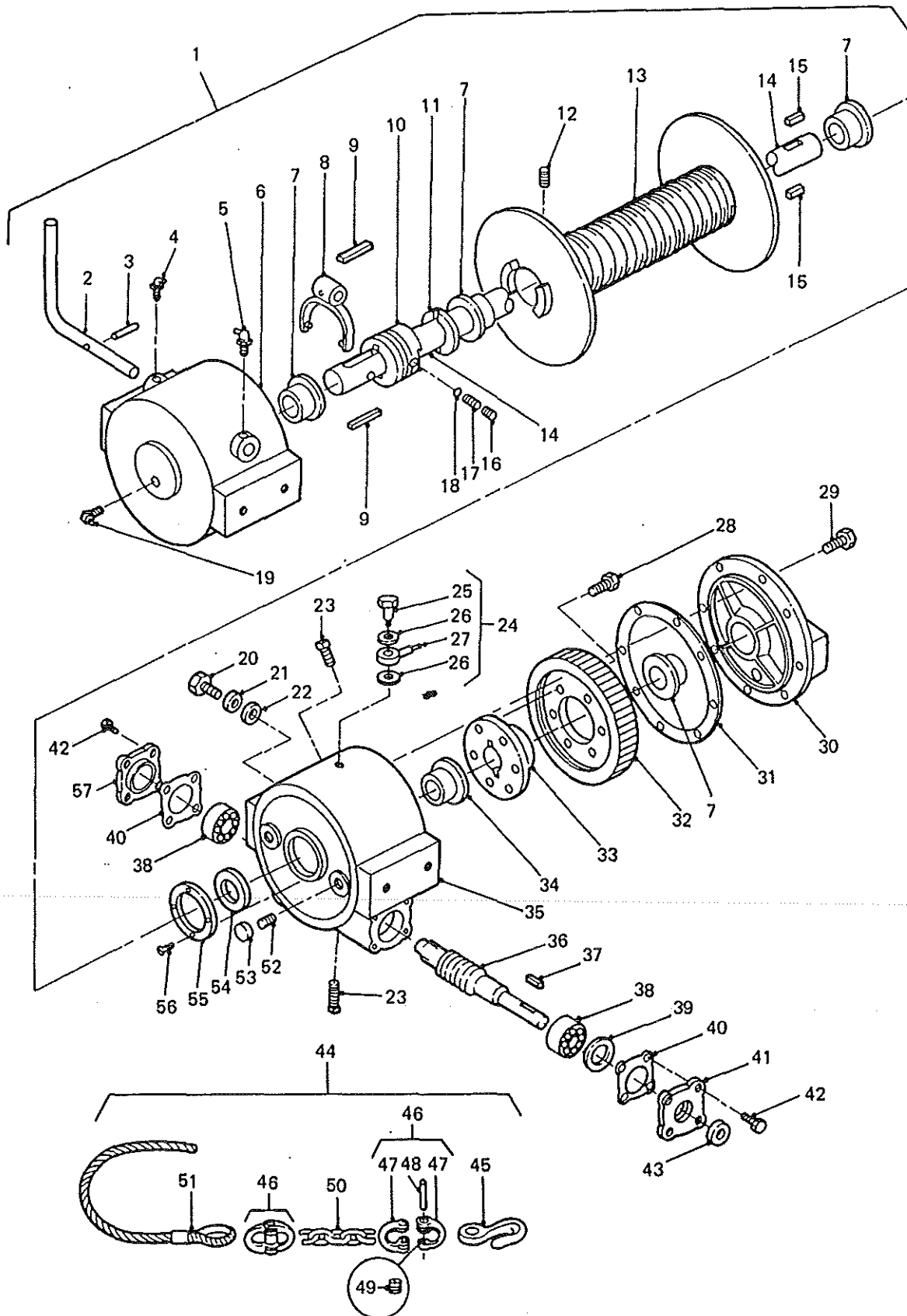


WINCH ASSEMBLY

GROUP UA
TITLE WINCH ASSEMBLY

ITEM NO	DESIGNATION	NSN MANUFACTURER CODE/PART NO SUPPLIER CODE/PART NO	NO OFF I	U O I	E X P	U* F* B*
013	DRUM, WINCH, GROOVED, 85 MM DIA., 280 MM LENGTH, 4 MM STEEL PLATE DISC AT EACH END	Z4820/T2493 Z0096/HYL8736	1			
014	SHAFT, DRIVE, WINCH DRUM, STEEL, 1.25 IN. DIA., 19.5 MM LENGTH	Z4820/T447 Z0096/HYL8737	1			
015	KEY, WINCH DRIVE SHAFT, STEEL, 0.3 IN. WIDTH, 0.3 IN. HEIGHT, 1 IN. LENGTH	Z4820/T71 Z0096/HYL8738	2			
016	SCREW, GRUB, 0.156 IN. INTERNAL HEX. DRIVE, 0.30 IN. UNC THREAD, 18 T.P.I., 0.31 IN. LENGTH	Z4820/T2895 Z0096/HYL8739	1			
017	SPRING, DETENT, HELICAL COIL, 0.25 IN. O.D., 1.25 IN. LENGTH	Z4820/T61 Z0096/HYL8740	1			
018	BALL, DENTENT, STEEL 0.25 IN. DIA.	Z4820/T60 Z0096/HYL8741	1			
019	FITTING, LUBRICATION, 90 DEG, 1/8 IN. GAS THD	4730 66-128-5068 Z4820/T1649 Z0096/HYL8742	1			UFB
020	SCREW, WINCH TO MOUNTING BRACKET, HEX. HEAD, MEDIUM TENSILE, 12 MM COARSE THREAD, 25 MM LENGTH, ZINC PLATED	Z4820/T2494 Z0096/HYL8770	8			
021	WASHER, LOCK, SINGLE COIL, RECTANGULAR SECTION, 12 MM I.D., ZINC PLATED	Z4820/T2537 Z0096/HYL8781	8			
022	WASHER, FLAT, ROUND, STEEL, 12 MM NOMINAL BOLT SIZE, 24 MM O.D., 2.5 MM THK.E	U1030/WA112081 Z0096/WA112081	8			
023	PLUG, OIL RESERVOIR, 1/2 IN. SQUARE HEAD, 0.650 IN. GAS THREAD	Z4820/T88 Z0096/HYL8745	2			
024	BREATHING, WINCH HOUSING (INCLUDES UA 025, UA 026 AND UA 027)	2520 66-128-5303 U1030/FRC9430 Z0096/FRC9430	1			UFB
ISSUE NO: 2 REPAIR PARTS SCALE : 02189 PAGE NO: 387						

* LEVEL OF REPAIR (UNIT FIELD OR BASE)



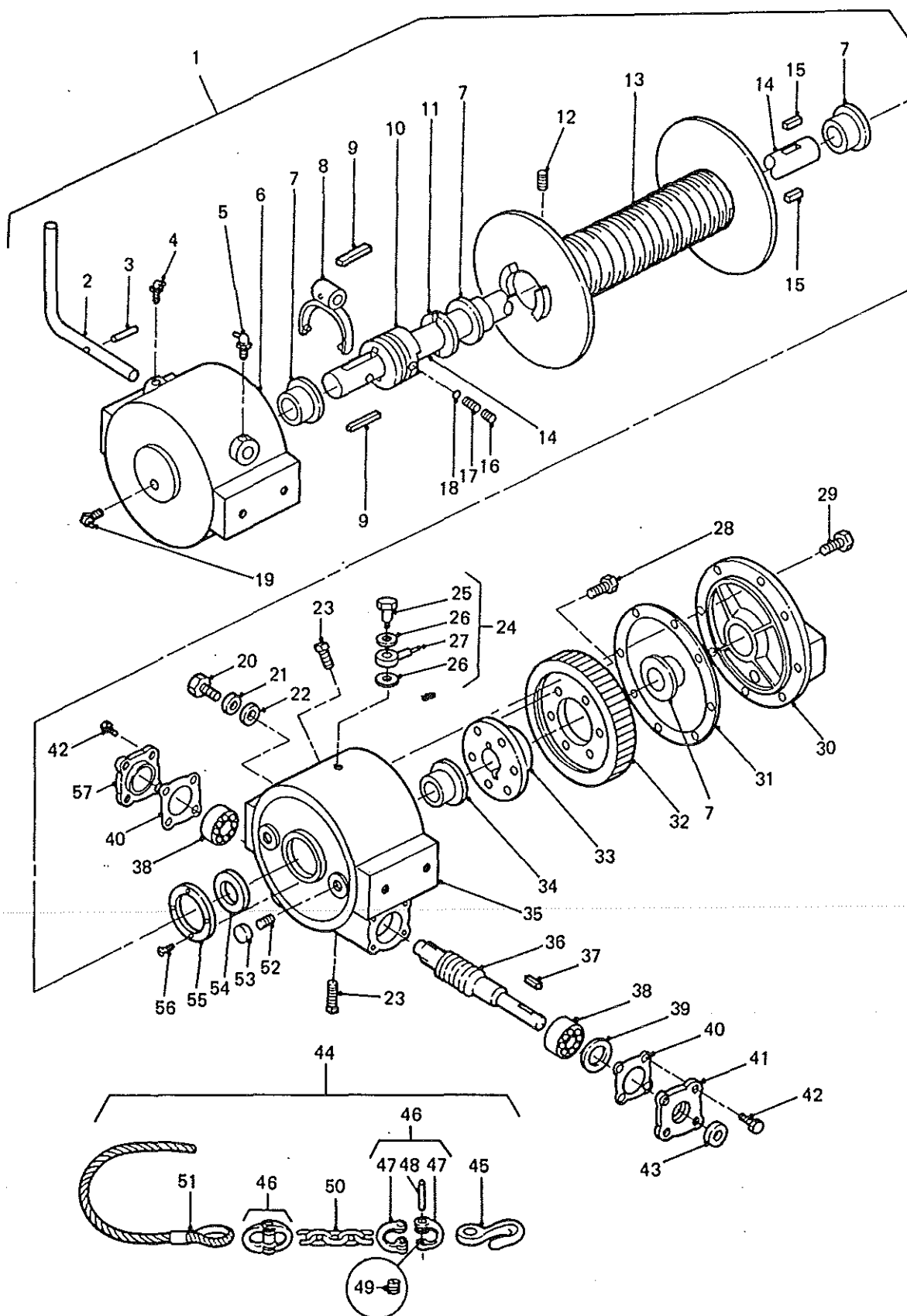
WINCH ASSEMBLY

GROUP UA
TITLE WINCH ASSEMBLY

ITEM NO	DESIGNATION	NSN MANUFACTURER CODE/PART NO SUPPLIER CODE/PART NO	NO OFF	U O I	E X P	U* F* B*
025	BOLT, FLUID PASSAGE, BSPF, STEEL ZINC PLATED, 1/8 IN. , 0.920 IN. MAX, 0.900 IN. MIN LG (ALSO PART OF UA 024)	4730 99-137-6379 U1030/595478 Z0096/R595478	1	EA	X	UFB
026	WASHER, FIBRE, BREATHER (ALSO PART OF UA 024)	4930 99-842-3988 U1030/599575 Z0096/R599575	2	EA	X	UFB
027	PIPE, BREATHER, 6 MM O.D., 4 MM I.D., CLEAR PLASTIC, COMPLETE WITH 'BANJO' FITTING (USE UA 024)	/NIL /NIL	1			
9001	TIE, CABLE, BREATHER PIPE, 380 MM LENGTH, 5 MM WIDTH, 1 MM THICKNESS, BLACK NYLON, SELF LOCKING	Z3663/T50L Z0096/MYH1940	1			
9002	PLUG, PLASTIC, BREATHER HOLE (ALSO PART OF UA 001)	Z4820/T2800 /NIL	1			
028	SCREW, HEX. HEAD, 5/16 IN. UNC THREAD, 3/4 IN. LENGTH, GRADE 8	Z4820/T82 Z0096/HYL8743	6			
029	SCREW, HEX. HEAD, 1/4 IN. UNC THREAD, 3/4 IN. LENGTH, MEDIUM TENSILE	Z4820/T2896 Z0096/HYL8744	8			
030	COVER, END, WINCH HOUSING	Z4820/T2734 Z0096/HYL8746	1			
031	GASKET, END COVER TO WINCH HOUSING, PAPER	5330 66-128-5205 Z4820/T87 Z0096/HYL8747	1			UFB
032	GEAR, WHEEL, WINCH DRIVE, BRASS	Z4820/T2817 Z0096/HYL8748	1			
033	HUB, GEAR WHEEL, STEEL	Z4820/T73 Z0096/HYL8749	1			
034	BUSH, BRONZE, 1.25 IN. I.D., 1.5 IN. O.D., 1.875 IN. FLANGE DIA., 0.83 IN. LENGTH, 0.094 IN. FLANGE WIDTH	Z4820/T2735 Z0096/HYL8771	1			

ISSUE NO: 2 REPAIR PARTS SCALE : 02189 PAGE NO: 388

* LEVEL OF REPAIR (UNIT FIELD OR BASE)



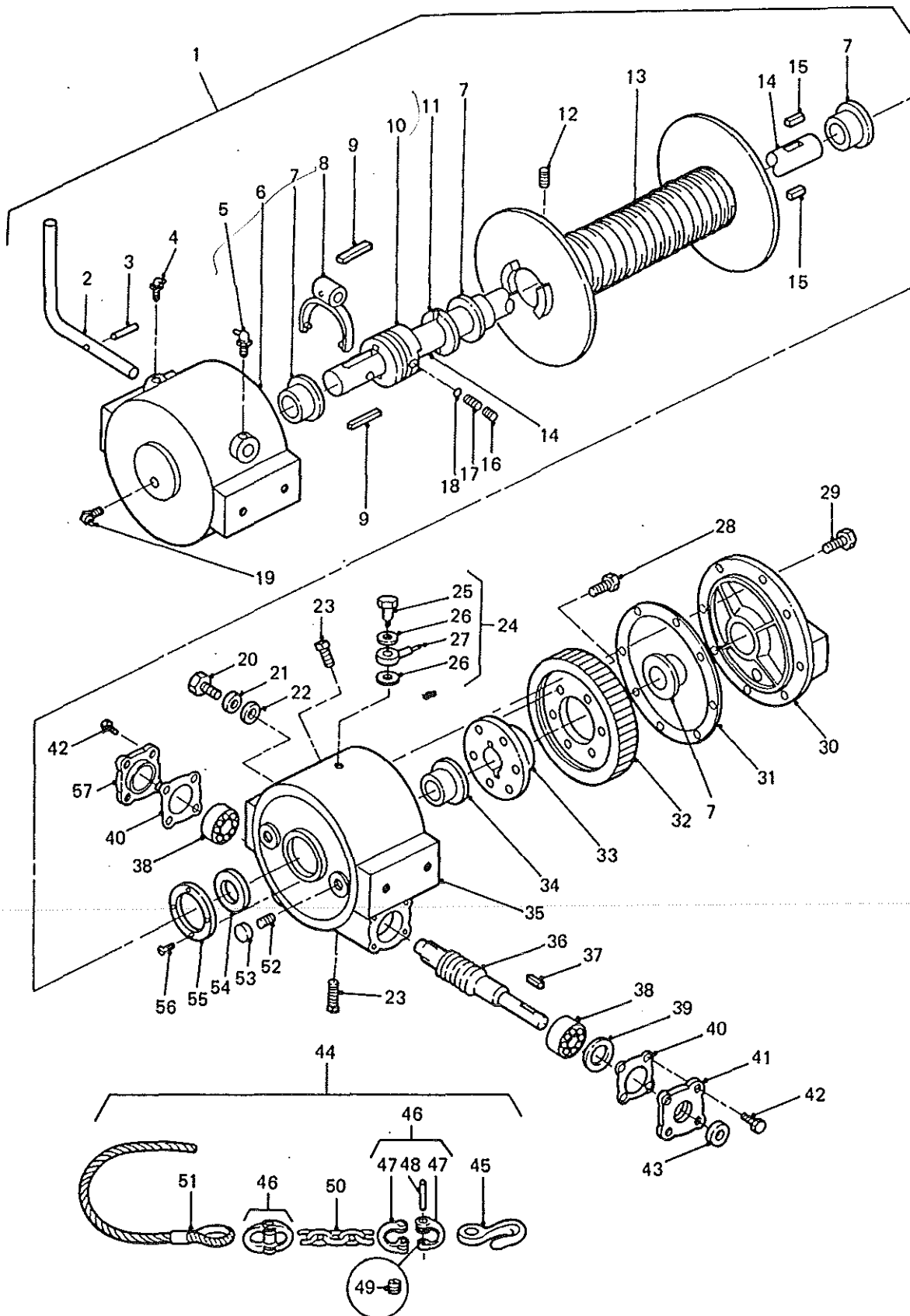
WINCH ASSEMBLY

GROUP UA
TITLE WINCH ASSEMBLY

ITEM NO	DESIGNATION	NSN MANUFACTURER CODE/PART NO SUPPLIER CODE/PART NO	NO OFF	U O I	E X P	U* F* B*
035	HOUSING, WINCH DRIVE GEAR, CAST ALUMINIUM	Z4820/T2491 Z0096/HYL8750	1			
036	GEAR, WORM, WINCH DRIVE	Z4820/T74 Z0096/HYL8772	1			
037	KEY, WORM DRIVE SHAFT TO DRIVE LINE YOKE, 4.76 MM WIDTH, 4.76 MM HEIGHT, 26 MM LENGTH, STEEL	Z4820/T84 Z0096/HYL8751	1			
038	BEARING, BALL, ANNULAR, ROUND, AXIAL LOAD	53035/NSK7304B Z0096/HYL8752	2			
039	WASHER, THRUST, WORM DRIVE BEARING, WHITE NYLON, 50 MM O.D., 40 MM I.D.	Z4820/T92 Z0096/HYL8795	1			
040	GASKET, PAPER, 2-3/32 IN. ID, 3-5/16 IN. OD, 4 HOLES 21/64 IN. DIA	5330 66-128-5208 Z4820/T76 Z0096/HYL8754	2			UFB
041	COVER, END, WORM DRIVE, REAR	Z4820/T77 Z0096/HYL8755	1			
042	SCREW, HEX. HEAD, 5/16 IN. UNC THREAD, 1 IN. LENGTH, MEDIUM TENSILE STEEL	Z4820/T80 Z0096/HYL8756	8			
043	SEAL, PLAIN ENCASED, 19.05 MM ID, 31.75 MM OD, 6.35 MM W	5330 66-128-5209 Z4820/T78 Z0096/HYL8757	1			UFB
044	WIRE ROPE ASSEMBLY, SINGLE LEG, WINCH ROPE, 48 M LG O/A W/ATTACHMENTS (INCLUDES UA 045 TO UA 051, ALSO PART OF UA 001)	4010 66-130-4828 Z4820/T2495 Z0096/HYL8780	1			UFB
045	HOOK, GRAB, HERC-ALLOY STEEL, WINCH CABLE, 9/32 IN. CHAINSIZE	4030 66-128-5272 Z0743/AF270 /NIL	1			UFB
046	LINK, CHAIN, SWING, ALLOY STEEL, HAMMERLOCK LINK, FOR 9/32 IN. DIA CHAIN, 3130 LBS SWL (INCLUDES UA 047 TO UA 049)	4010 66-024-4994 Z0743/AF010 /NIL	2	EA	X	UFB

ISSUE NO: 2 REPAIR PARTS SCALE : 02189 PAGE NO: 389

* LEVEL OF REPAIR (UNIT FIELD OR BASE)



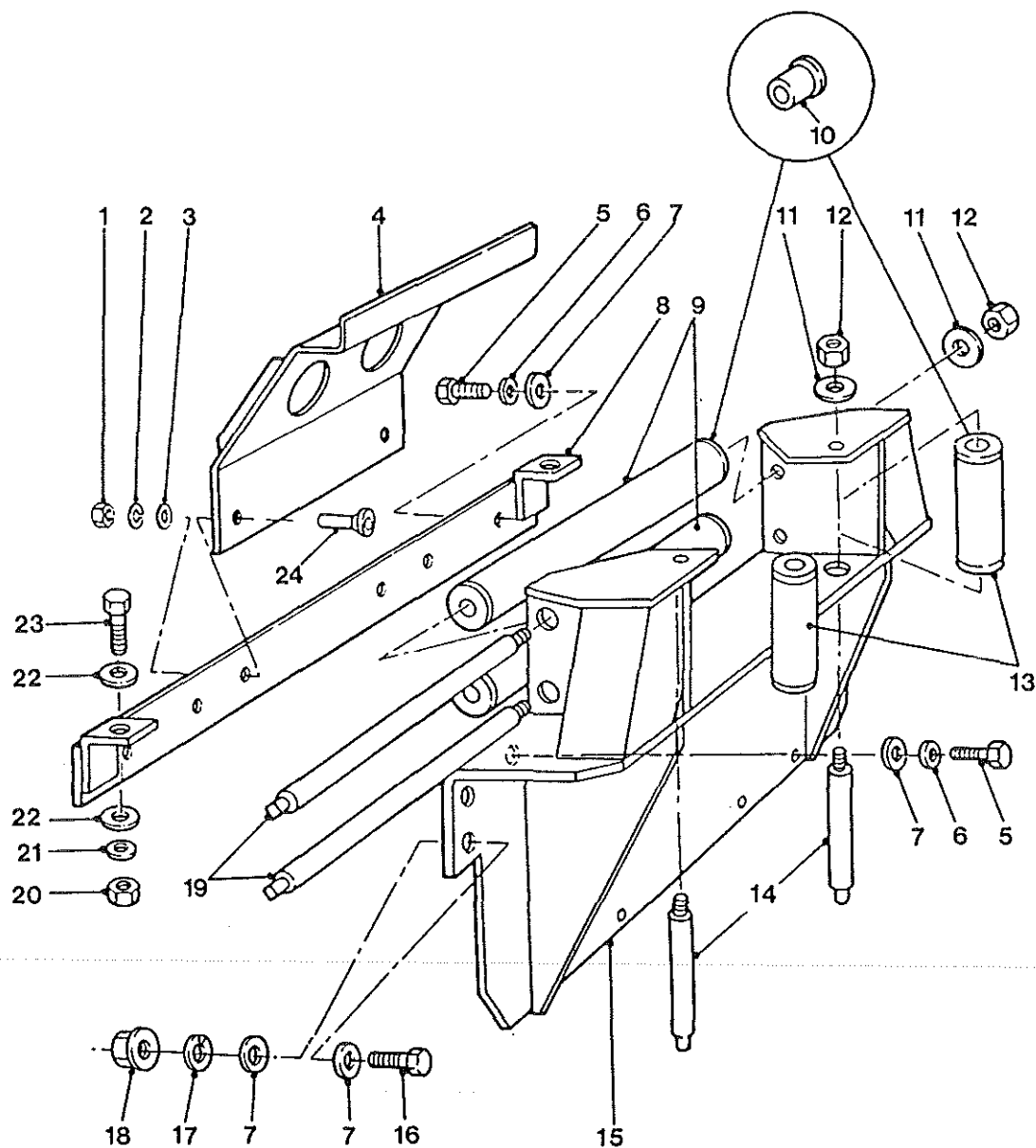
WINCH ASSEMBLY

GROUP UA
TITLE WINCH ASSEMBLY

ITEM NO	DESIGNATION	NSN MANUFACTURER CODE/PART NO SUPPLIER CODE/PART NO	NO OFF	U I	E P	U* F* B*
047	BODY, HALF, HAMMERLOK (USE UA 046)	/NIL /NIL	2			
048	PIN, LOCKING, HAMMERLOK (USE UA 046)	/NIL /NIL	1			
049	STUD, HAMMERLOK (USE UA 046)	/NIL /NIL	1			
050	CHAIN, WELDED, STEEL, 9/32 IN. DIA, 4100 LBS SWL, 2 M LG (ALSO PART OF UA 044)	4010 01-008-9456 Z0743/AC010 /NIL	1			UFB
051	ROPE, 10 MM DIA., 45 M LENGTH, 6 BY 25 I.W.R.C., R.H.O.L., BLACK WIRE, M/C SPliced WITH THIMBLE ONE END ONLY (USE UA 044)	/NIL /NIL	1			
052	SPRING, HELICAL, COMPRESSION, SPRING STEEL, 2.1 MM-2.3 MM WIRE DIA, 13/16 IN. OD BY 3/4 IN. O/A LG	5360 66-128-5204 Z4820/T68 Z0096/HYL8758	2			UFB
053	PAD, BRAKE. WINCH.	2530 66-128-5121 Z4820/T67 Z0096/HYL8759	2			UFB
054	SEAL, PLAIN ENCASED, 31.7 MMID, 50.8 MM OD, 9.5 MM THK	5330 66-128-5074 Z4820/T1 Z0096/HYL8753	1			UFB
055	WASHER, THRUST, NYLON, 86 MM O.D., 54 MM I.D., 6 MM THICKNESS, 4 BY 6 MM DIA. COUNTERSUNK HOLES	Z4820/T2797 Z0096/HYL8782	1			
056	SCREW, THRUST WASHER TO HOUSING, COUNTERSUNK HEAD, 1/4 IN. UNC, 9.5 MM LENGTH, GRADE 8 STEEL, 5/32 IN. HEXAGONAL SOCKET DRIVE	Z4820/T2798 Z0096/HYL8783	4			
057	COVER, END, WORM DRIVE, FRONT	Z4820/T79 Z0096/HYL8760	1			

ISSUE NO: 2 REPAIR PARTS SCALE : 02189 PAGE NO: 390

* LEVEL OF REPAIR (UNIT FIELD OR BASE)

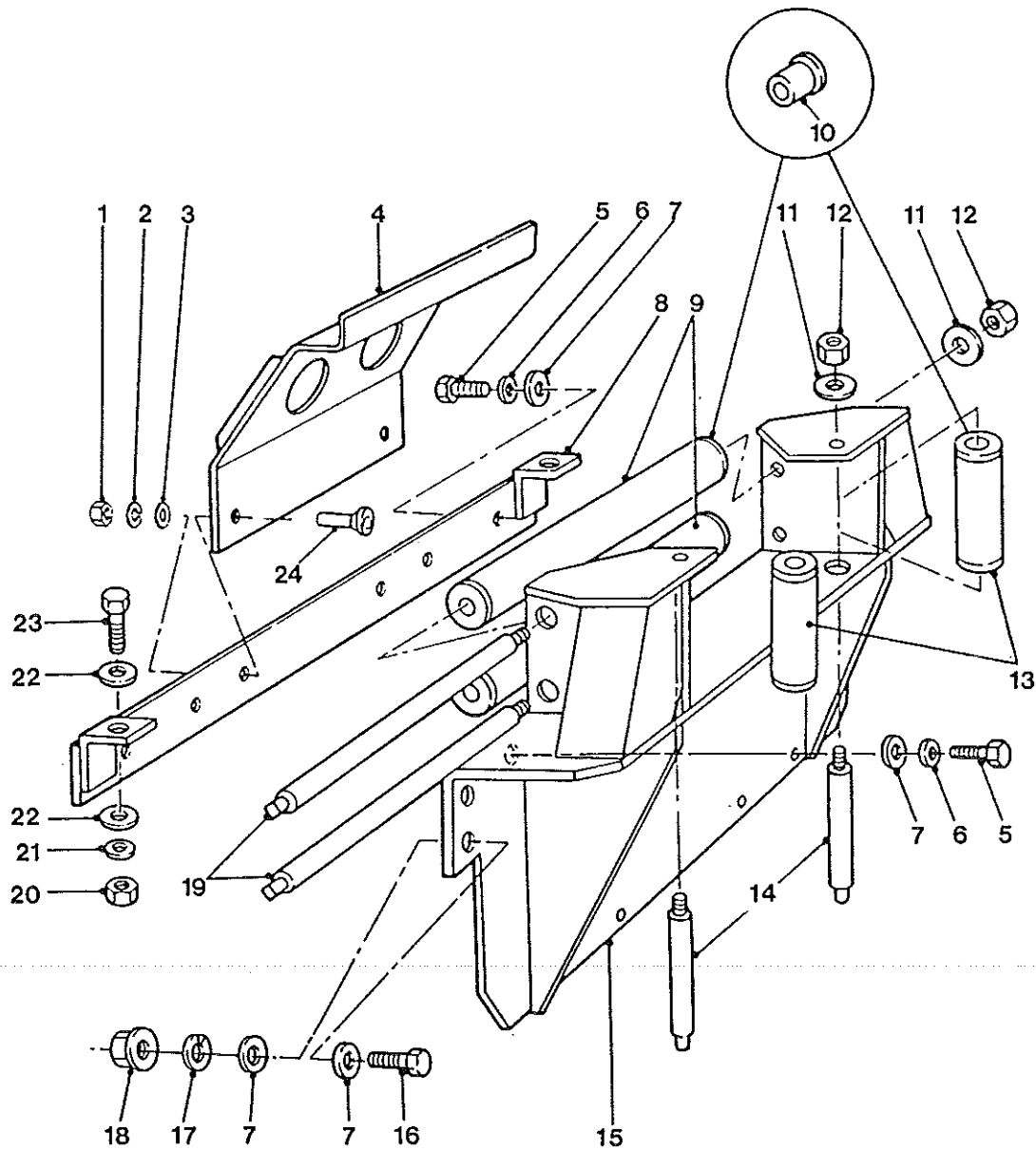


WINCH MOUNTINGS AND ROLLERS

GROUP UAA
TITLE WINCH MOUNTINGS AND ROLLERS

ITEM NO	DESIGNATION	NSN MANUFACTURER CODE/PART NO SUPPLIER CODE/PART NO	NO OFF	U O	E X	U* F* B*
001	NUT, PLAIN, HEXAGON, ISOMETRIC, 6H, STEEL, ZINC PLATED AND CHROMATED, 8 MM DIA, 13 MM W A/F, 5 MM H O/A, CSK BOTH FACES	5310 99-139-0313 U1030/NH108041 Z0096/FRC5801	2			UFB
002	WASHER, LOCK, SPRING, STEEL, ZINC PLATED, 8 MM ID, 14.85 MM OD, 2 MM THK	5310 99-138-9227 U1030/WL108001 Z0096/WL108001	2	EA	X	UFB
003	WASHER, FLAT, ISO, STEEL, RD, ZINC PLATED, 8 MM ID BY 17 MM OD BY 1.60 MM THK. K0195 BS4320-1968	5310 99-122-6475 U1030/WA108051 Z0096/WA108051	2	EA	X	UFB
004	GUARD, GRILLE, 3 MM STEEL PLATE, 280 MM LENGTH, 130MM HEIGHT, 2 BY 50 MM DIA. HOLES, 2 REINFORCING RIBS - 3 MM THICKNESS, 10 MM HEIGHT, 110 MM LENGTH, SPECIAL	Z0096/HYG3969 /NIL	1			
005	SCREW, MACHINE, ISO METRIC, 6G, GRADE 8.8 STEEL, HEX HD, ZINC PLATED W/CHROMATE, 12 MM DIA, 35 MM LG	5305 99-122-8675 U0795/SH112351 Z0096/SH112351	8	EA	X	UFB
006	WASHER, LOCK, SINGLE TURN, RECT SECTION, 12 MM ID, ZINCPLT	5310 66-128-5109 Z4820/T2537 Z0096/HYL8781	8			UFB
007	WASHER, FLAT, RD, STEEL, 12 MM NOM BOLT SIZE, 24 MM OD, 2.50 MM THK	5310 99-122-6477 U1030/WA112081 Z0096/WA112081	16	EA	X	UFB
008	BRACKET, WINCH MOUNTING, REAR, 626 MM LENGTH, 40 MM WIDTH, 6 MM THICKNESS, 2 ANGLE LUGS WELDED TO EACH END - 38 BY 38 MM, 38 MM LENGTH, 6 MM THICKNESS, STEEL	Z4820/T2818 Z0096/HYG3026	1			
009	ROLLER ASSEMBLY, FAIRLEAD, HORIZONTAL, STEEL, 48.3 MMO/D, 363 MM LG (INCLUDES UAA 010)	2590 66-128-5064 Z0096/HYG3138 /NIL	2			UFB
010	BUSHING, SLEEVE, BRONZE (ALSO PART OF UAA 009, 4 OFF AND UAA 013, 4 OFF)	3120 66-128-5065 Z0096/MYH3327 /NIL	8			UFB
ISSUE NO: 2 REPAIR PARTS SCALE : 02189 PAGE NO: 391						

* LEVEL OF REPAIR (UNIT FIELD OR BASE)



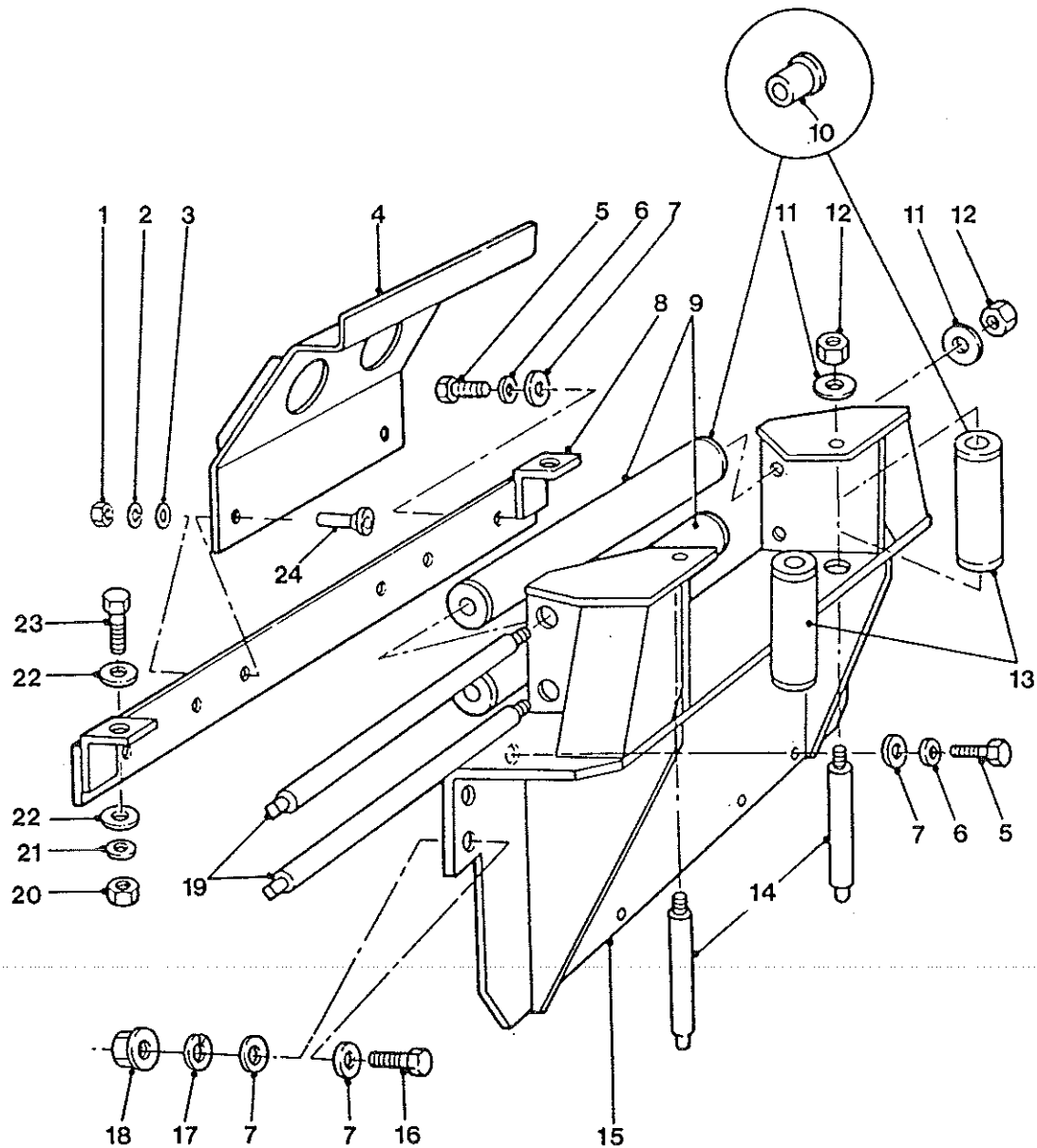
WINCH MOUNTINGS AND ROLLERS

GROUP UAA
TITLE WINCH MOUNTINGS AND ROLLERS

ITEM NO	DESIGNATION	NSN MANUFACTURER CODE/PART NO SUPPLIER CODE/PART NO	NO OFF	U O I	E X P	U* F* B*
011	WASHER, FLAT, RD, STEEL, ZINC PLATED, 16 MM BOLT SIZE, 30 MM OD BY 3 MM THK	5310 99-122-6479 U1030/WA116101 Z0096/WA116101	4	EA	X	UFB
012	NUT, SELF-LOCKING, HEXAGON, ISO M, 6H, STEEL, ZINC PLATED, 16 MM, W/NYLON INSERT, 24MM W A/F, 16 MM H	5310 99-122-5503 U1030/NY116041 Z0096/NY116041	4	EA	X	UFB
013	ROLLER ASSEMBLY. FAIRLEAD, VERTICAL, STEEL. (INCLUDES UAA 010)	2590 66-128-5066 Z0096/HYG3139 /NIL	2			UFB
014	SHAFT, ROLLER. FAIRLEAD, VERTICAL, STEEL, 24MM DIA.	2590 66-128-5118 Z0096/HYG2113 /NIL	2			UFB
015	BRACKET, WINCH AND ROLLER MOUNTING	Z0096/HYG2107 /NIL	1			
016	SCREW, MACHINE, ISO METRIC, STEEL, HEXAGONHEAD, ZINC PLA TED, 12.0 MM BY 45.0 MM LG, 1.75 MM PITCH	5305 66-128-6192 U1030/SH112451 Z0096/SH112451	4			UFB
017	WASHER, LOCK, SINGLE COIL, RECT SECTION, 12 MM ID, ZINC PLT	5310 66-128-5111 U1030/WL112001 Z0096/WL112001	4			UFB
018	NUT, PLAIN, EXTENDED WASHER, HEXAGON, ISOMETRIC, STEEL, ZINC PLATED, 12 MM THD SIZE	5310 66-128-4585 U1030/FN112041 /NIL	4	EA	X	UFB
019	SHAFT, ROLLER. FAIRLEAD, LONGITUDINAL, STEEL, 24MM DIA.	2590 66-128-5067 Z0096/HYG2112 /NIL	2			UFB
020	NUT, PLAIN, HEXAGON, ISO METRIC, 6H, GRADE 8, STEEL, CAD PLATED AND PASSIVATED, 10 MM DIA, 16 MM W A/F, 8 MM H O/A	5310 66-098-4403 U1030/NH110041 /NIL	2	EA	X	UFB
021	WASHER, LOCK, SPRING, STEEL, SINGLE TURN, ZINC PLATED, 10 MM, 15.90 MM OD, 2.50 MM THK	5310 99-138-9228 U1030/WL110001 Z0096/WL110001	2	EA	X	UFB
022	WASHER, FLAT, 10.0 MM I.D., ZINC PLATED	5310 99-122-6476 U1030/WA110061 Z0096/WA110061	4	EA	X	UFB

ISSUE NO: 2 REPAIR PARTS SCALE : 02189 PAGE NO: 392

* LEVEL OF REPAIR (UNIT FIELD OR BASE)



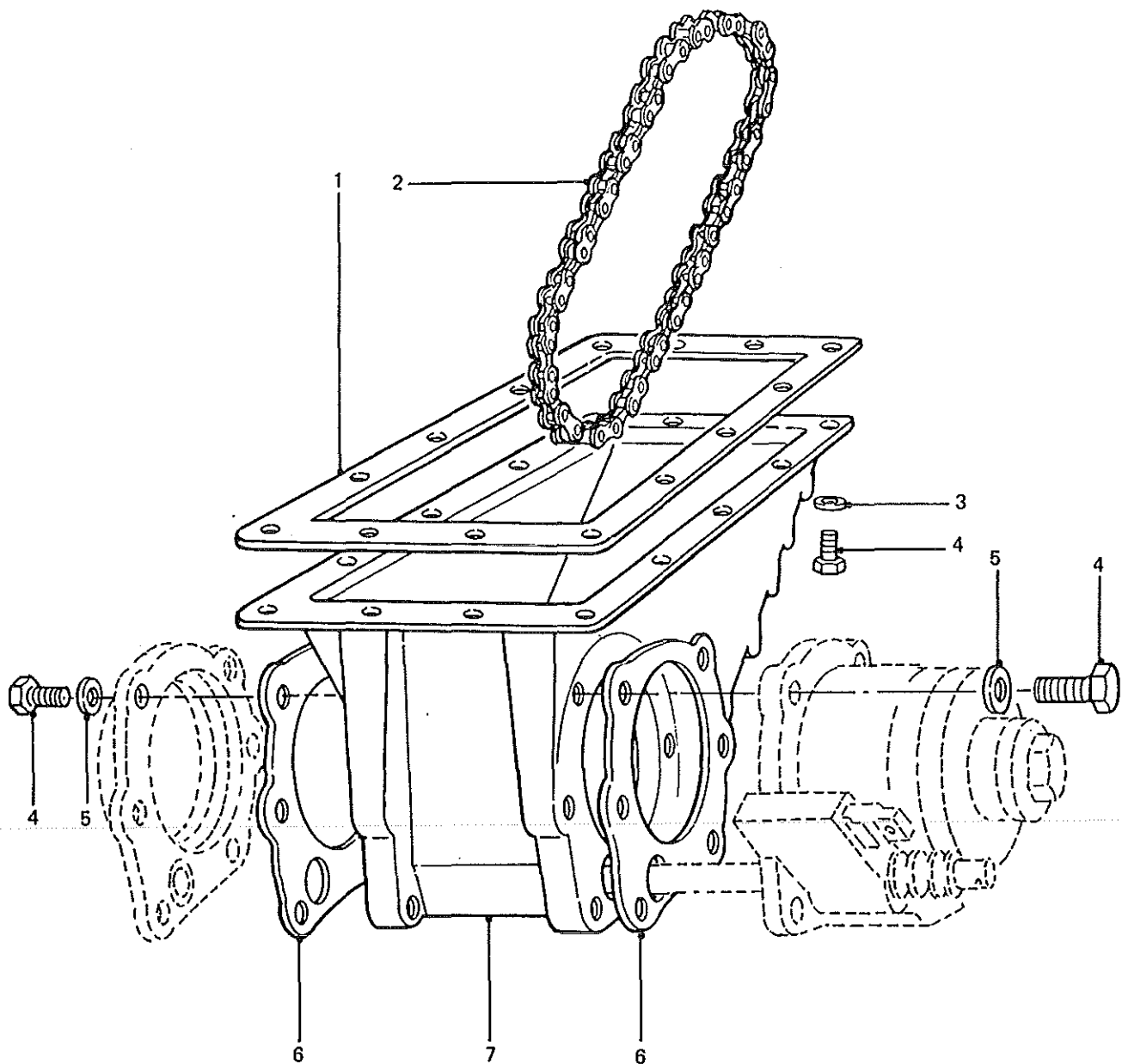
WINCH MOUNTINGS AND ROLLERS

GROUP UAA
 TITLE WINCH MOUNTINGS AND ROLLERS

ITEM NO	DESIGNATION	NSN MANUFACTURER CODE/PART NO SUPPLIER CODE/PART NO	NO OFF I	U O I	E X P	U* F* B*
023	SCREW, MACHINE, ISO METRIC, 6G, GRADE 8.8 STEEL, HEX HD, CAD PLATED & PASSIVATED, 10 MM DIA, 30 MM LG	5305 66-098-4283 U1030/SH110301 /NIL	2	EA	X	UFB
024	SCREW, CAP, SOCKET HEAD, COUNTERSUNK, 8MM DIA BY 20 MM L G, ZINC PLATED	5305 66-128-5937 Z0096/SJ108201 /NIL	2			UFB

ISSUE NO: 2 REPAIR PARTS SCALE : 02189 PAGE NO: 393

* LEVEL OF REPAIR (UNIT FIELD OR BASE)



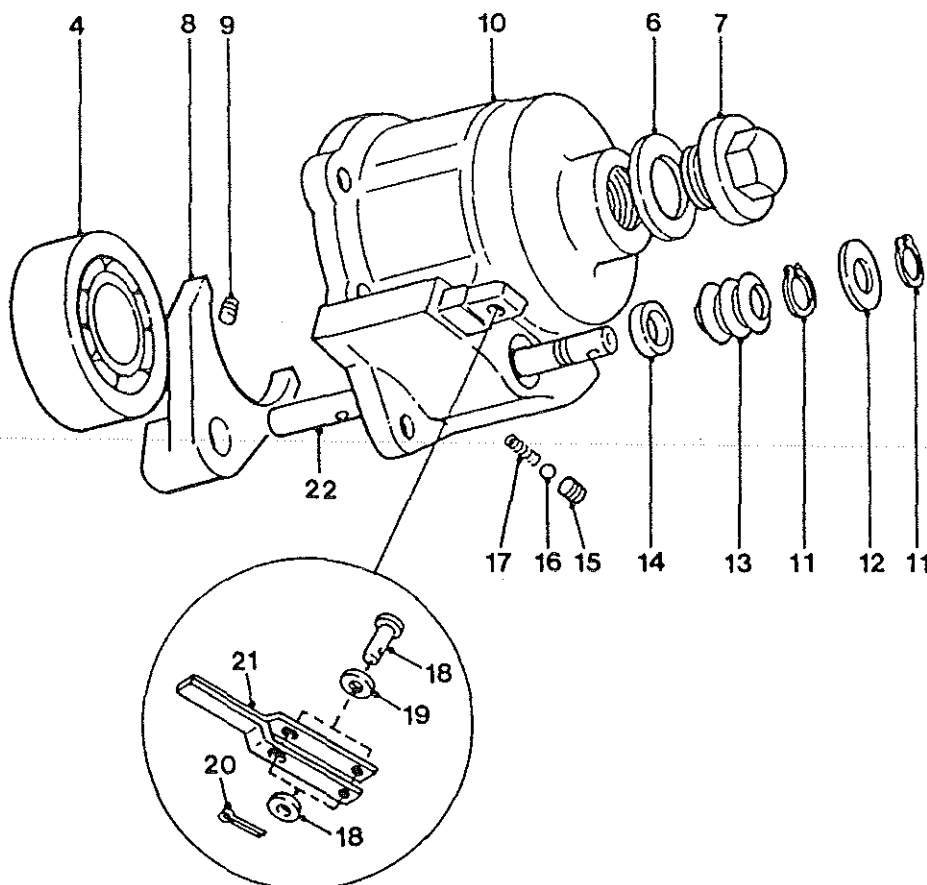
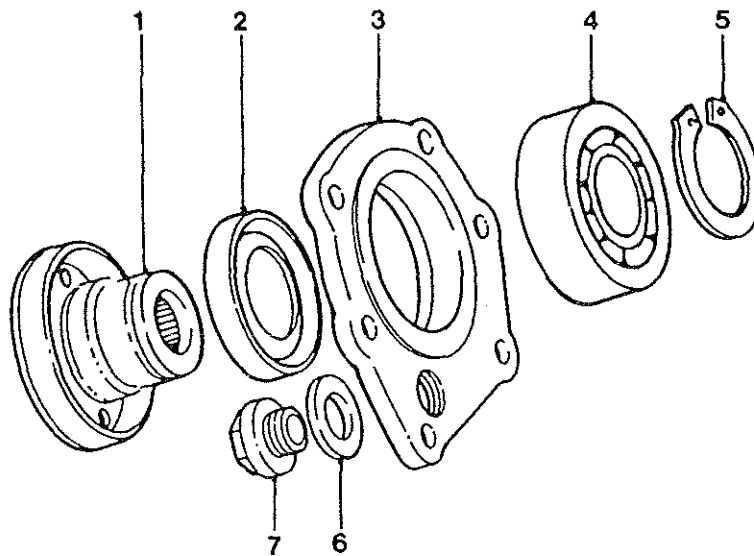
POWER TAKE-OFF HOUSING AND CHAIN

GROUP UC
TITLE POWER TAKE-OFF HOUSING AND CHAIN

ITEM NO	DESIGNATION	NSN MANUFACTURER CODE/PART NO SUPPLIER CODE/PART NO	NO OFF I	U O P	E X P	U* F* B*
001	GASKET, ASBESTOS FIBRE AND SYNTHETIC RUBBER, 309 MM LG, 190 MM W, 8 MM FACE W, 3/4 MM THK, 14 HOLES 9 MM DIA	5330 99-822-1724 U1030/FRC7104 Z0096/FRC7104	1	EA	X	FB
002	CHAIN, ROLLER, 0.5 IN. PITCH, 28.5 IN. LG, WINCH DRIVE	3020 66-073-6566 Z0096/AYG3351 /NIL	1			FB
003	WASHER, LOCK, STEEL, SINGLE COIL, SQUARE SECTION, 8 MM BOLT SIZE	5310 99-135-9302 U1030/WM108001 Z0096/WM108001	14	EA	X	FB
004	SCREW, MACHINE, ISO METRIC, STEEL, HEX HD, 8 MM BY 25 MM LG	5305 99-122-5367 U1030/SH108251 Z0096/SH108251	26	EA	X	FB
005	WASHER, LOCK, SPRING, STEEL, ZINC PLATED, 8 MM ID, 14.85 MM OD, 2 MM THK	5310 99-138-9227 U1030/WL108001 Z0096/WL108001	12	EA	X	UFB
006	GASKET, FRONT AND REAR PTO HOUSING, OIL RESISTANT PAPER	5330 66-128-5210 Z0096/AYG3353 /NIL	2			UFB
007	HOUSING, P.T.O., CAST ALUMINIUM	Z0096/AYG3540 /NIL	1			

ISSUE NO: 2 REPAIR PARTS SCALE : 02189 PAGE NO: 394

* LEVEL OF REPAIR (UNIT FIELD OR BASE)



POWER TAKE-OFF BEARING AND SELECTOR HOUSING ASSEMBLIES

GROUP UCA

TITLE POWER TAKE-OFF BEARING AND SELECTOR HOUSING ASSEMBLIES

ITEM NO	DESIGNATION	NSN MANUFACTURER CODE/PART NO SUPPLIER CODE/PART NO	NO OFF	U O I	E X P	U* F* B*
001	FLANGE, COMPANION, UNIVERSALJOINT. OUTPUTWINCH	3010 66-128-5232 Z0096/AYG3344 /NIL	1			UFB
002	SEAL, PLAIN, ENCASED, 72 MM OD, 12 MM W, TO FIT 50 MM D IA SHAFT	5330 66-128-5075 Z2823/CB845923/30 Z0096/MYH3106	1			UFB
003	CAP, END, P.T.O. HOUSING, CAST ALUMINIUM	Z0096/AYG3343 /NIL	1			
004	BEARING, BALL, ANNULAR, STEEL, 40 MM ID, 80 MM OD, 18 MM O/A W	3110 00-554-5302 Z0570/SKF6208 Z0096/NYH3102	1	EA	X	FB
005	RING, RETAINING, EXTERNAL CONTRACTING, 36.5 MM OD BY1.75 MM THK	5365 66-128-5076 Z0096/CR120405 /NIL	1			FB
006	GASKET, ASBESTOS-COPPER, 1-7/32 IN. ID BY 0.093 IN. THK	5330 99-137-3055 U1030/FRC4810 Z0096/FRC4810	2	EA	X	UFB
007	PLUG, SCREWED, SI METRIC, BRASS, HEX HD, 30 MM BY 13 MM LG	5365 99-823-7205 U1030/571104 Z0096/90571104	2	EA	X	UFB
008	FORK, SELECTOR, SLIDING CLUTCH, GUN-METAL, CAST, MACHINE FINISH	Z0096/AYG3348 /NIL	1			
009	SCREW, SOCKET, SELECTOR FORK TO SHAFT, HEX. SOCKET, CUP POINT, 8 MM COARSE THREAD, 12 MM LENGTH, NATURAL FINISH	Z0096/SK108120 /NIL	1			
010	HOUSING, TORQUE LIMITER, CAST ALUMINIUM	Z0096/AYG3413 /NIL	1			
011	RING, RETAINING, SPRING STEEL, EXTERNAL CONTRACTING, 12.9 MM ID, 1 MM THK, 1.7 MMLUG HOLE DIA	5365 66-128-5077 Z0096/CR120145 /NIL	2			UFB
012	WASHER, FLAT, 14 MM ID, ZINCPLT	5310 99-122-6478 U1030/WA114001 Z0096/WA114001	1			UFB

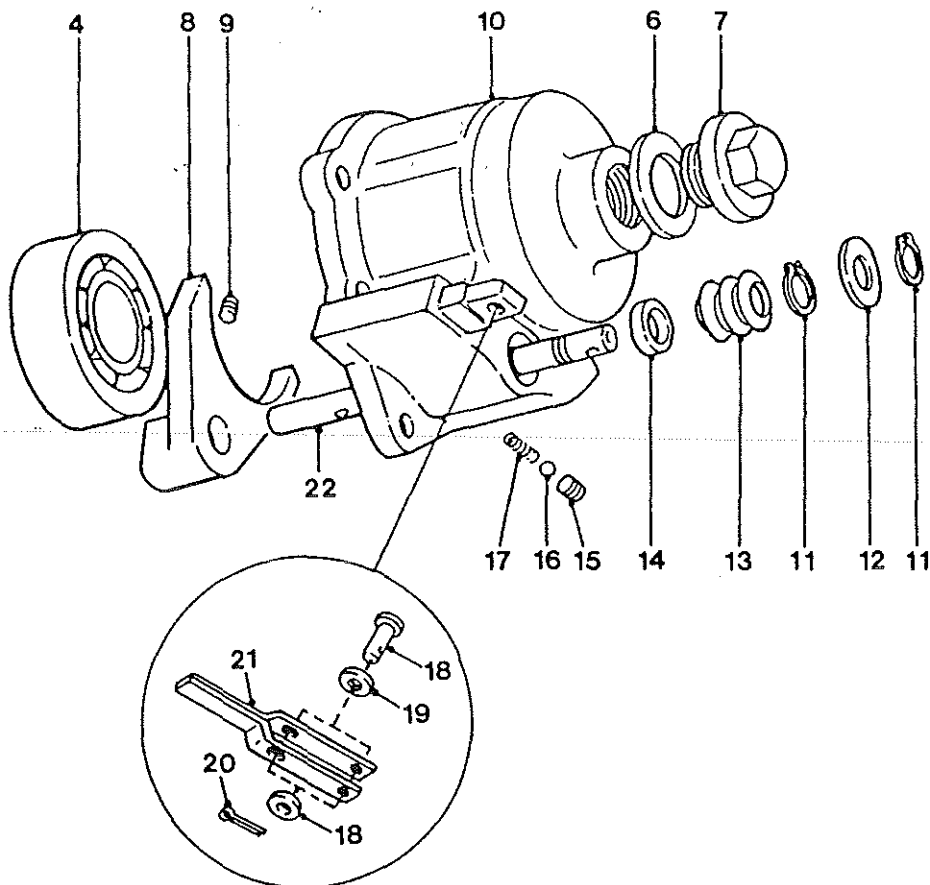
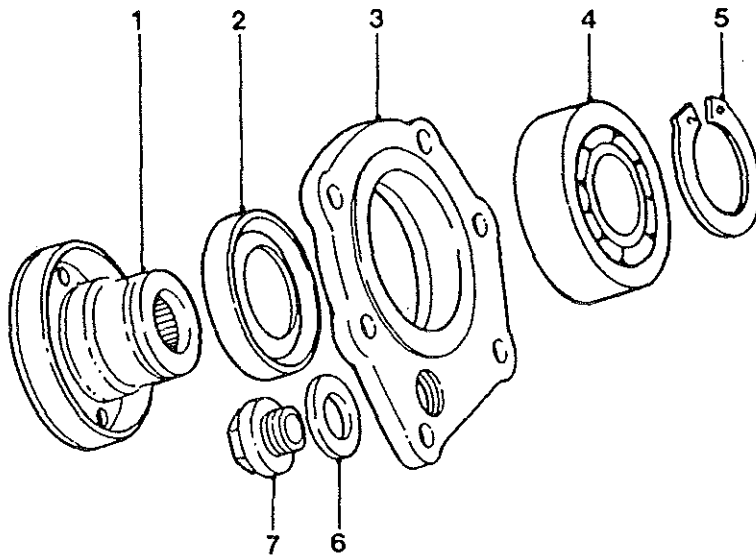
ISSUE NO: 2

REPAIR PARTS SCALE : 02189

PAGE NO:

395

* LEVEL OF REPAIR (UNIT FIELD OR BASE)

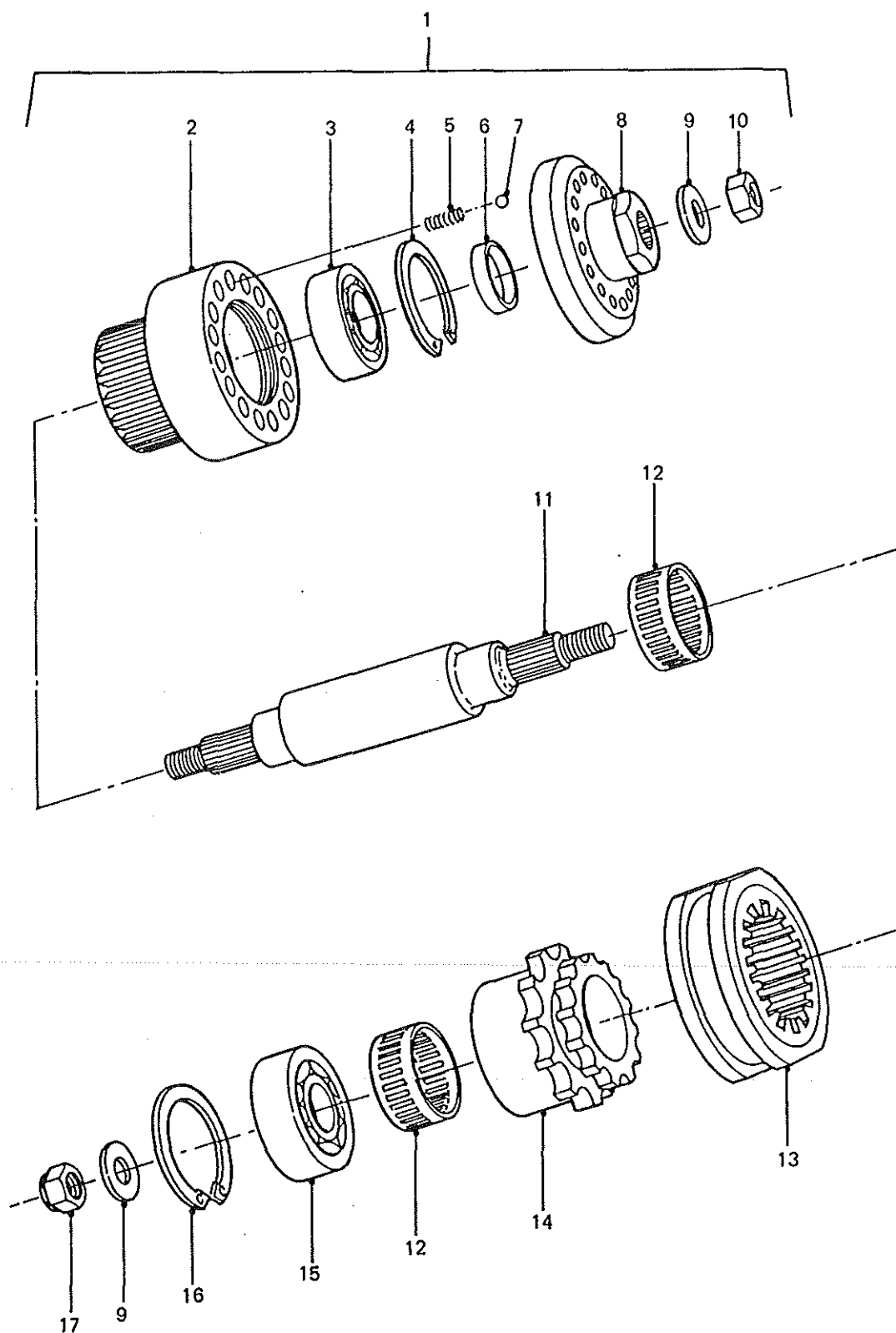


POWER TAKE-OFF BEARING AND SELECTOR HOUSING ASSEMBLIES

GROUP UCA
TITLE POWER TAKE-OFF BEARING AND SELECTOR HOUSING ASSEMBLIES

ITEM NO	DESIGNATION	NSN MANUFACTURER CODE/PART NO SUPPLIER CODE/PART NO	NO OFF	U O	E X	U* F* B*
013	CAP, PROTECTIVE, DUST AND MOISTURE SEAL, PTO SELECTOR SHAFT, MOULDED RUBBER CONVOLUTE, 25 MM OD, 19 MM ID, 35 MM LG, 0.9 MM THK	5340 66-128-5081 Z0096/DAM3022 /NIL	1			UFB
014	SEAL, PLAIN ENCASED, SINGLELIP, 31.75 MM OD, 5 MM THK BY 15 MM SHAFT DIA	5330 99-824-0238 U1030/AHU1672 Z0096/AHU1672	1			UFB
015	PLUG, DETENT SPRING RETAINING, TAPER, 0.47 IN. LG, 0.25 IN. NPTF THD, 0.25 IN. INT HEX HD, BRASS	5365 66-128-5082 Z0158/230576 Z0096/MYH3110	1			UFB
016	BALL, BEARING	3110 99-718-1217 U1030/571146 Z0096/R571146	1	EA	X	UFB
017	SPRING, HELICAL, COMPRESSIONSTEEL, 11.5 ACTIVE COILS, 8.75MM OD, 29.15MM FREE LENGTH	5360 99-823-8019 U1030/593802 Z0096/R593802	1	EA	X	UFB
018	PIN, STRAIGHT, HEADED, 6 MM DIA BY 30 MM LG, ZINC PLATED	5315 66-128-5105 Z0096/PC106481 /NIL	2			UFB
019	WASHER, FLAT, RD, STEEL, CAD PLATED AND PASSIVATED, 6 MM BOLT SIZE, 12.50 MM O/D, 1.32 MM THK	5310 66-098-4440 Z0096/WA106041 /NIL	4	EA	X	UFB
020	PIN, COTTER, 1.5 MM BY 12 MM LG	5315 66-128-5106 Z0096/PS103121 /NIL	1			UFB
021	LEVER, YOKE, SELECTOR SHAFT, 150 MM LENGTH, 20 MM WIDTH, 3 MM THICKNESS, ZINC PLATED, SPECIAL	Z0096/AYG3480 /NIL	1			
022	SHAFT, SELECTOR, SLIDING CLUTCH, 148 MM LENGTH, 14.96 MM DIA., STAINLESS STEEL	Z0096/AYG3481 /NIL	1			
ISSUE NO: 2 REPAIR PARTS SCALE : 02189 PAGE NO: 396						

* LEVEL OF REPAIR (UNIT FIELD OR BASE)



POWER TAKE-OFF AND TORQUE LIMITER

GROUP UCB
TITLE POWER TAKE-OFF AND TORQUE LIMITER

ITEM NO	DESIGNATION	NSN MANUFACTURER CODE/PART NO SUPPLIER CODE/PART NO	NO OFF	U O I	E X P	U* F* B*
001	TORQUE LIMITER ASSEMBLY (INCLUDES UCB 002 TO UCB 009 1 OFF AND UCB 010 TO UCB 016)	Z0096/AYG3485 /NIL	1			
002	HOUSING, TORQUE LIMITER	Z0096/AYG3406 /NIL	1			
003	BEARING, BALL, ANNULAR, 52 MM OD, 25 MM ID 15 MM W	3110 00-144-8518 52676/SKF6205 Z0096/MYH3169	1	EA	X	FB
004	RING, RETAINING, INTERNAL EXPANDING, 56 MM OD, 2 MM THK	5365 66-128-5078 U1030/CR110525 Z0096/CR110525	1			FB
005	SPRING, COMPRESSION, 8 MM OD, 21 MM LG, 1.2 MM WIRE DIA	5360 66-128-5083 Z0096/AYG3492 /NIL	12			FB
006	SHIM, STEEL, 32 MM O.D., 25.3 MM I.D., 5.5 MM THICKNESS (USE AS REQUIRED)	Z0096/AYG3410 /NIL	1			
9001	SHIM, STEEL, 32 MM O.D., 25.3 MM I.D., 6.00 MM THICKNESS (USE AS REQUIRED)	Z0096/AYG3411 /NIL	1			
9002	SHIM, STEEL, 32 MM O.D., 25.3 MM I.D., 6.50 MM THICKNESS (USE AS REQUIRED)	Z0096/AYG3412 /NIL	1			
007	BALL, BEARING. 8 MM DIA, STEEL.	3110 66-128-5119 Z0096/MYH3170 /NIL	12			FB
008	PLATE, TORQUE LIMITER DRIVE	Z0096/AYG3518 /NIL	1			
009	WASHER, FLAT, RD, STEEL, 12 MM NOM BOLT SIZE, 24 MM OD, 2.50 MM THK (ALSO PART OF UCB 001 - 1 OFF)	5310 99-122-6477 U1030/WA112081 Z0096/WA112081	2	EA	X	FB
010	NUT, SELF LOCKING, HEXAGON, ISOMETRIC, STEEL, ZINC PLATED, 12 MM THD	5310 99-139-9037 U1030/NV112041 Z0096/NV112041	1	EA	X	FB

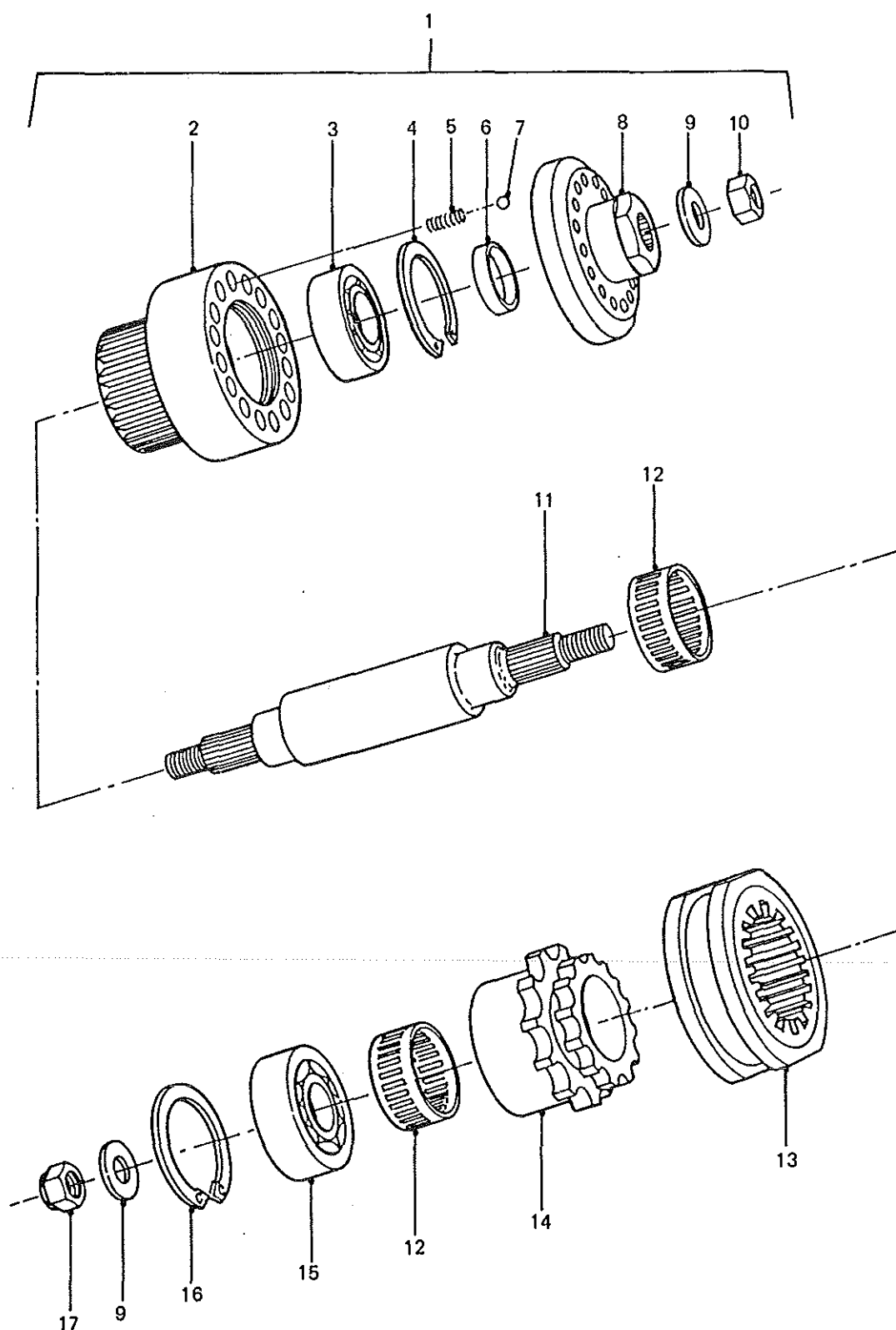
ISSUE NO: 2

REPAIR PARTS SCALE : 02189

PAGE NO:

397

* LEVEL OF REPAIR (UNIT FIELD OR BASE)

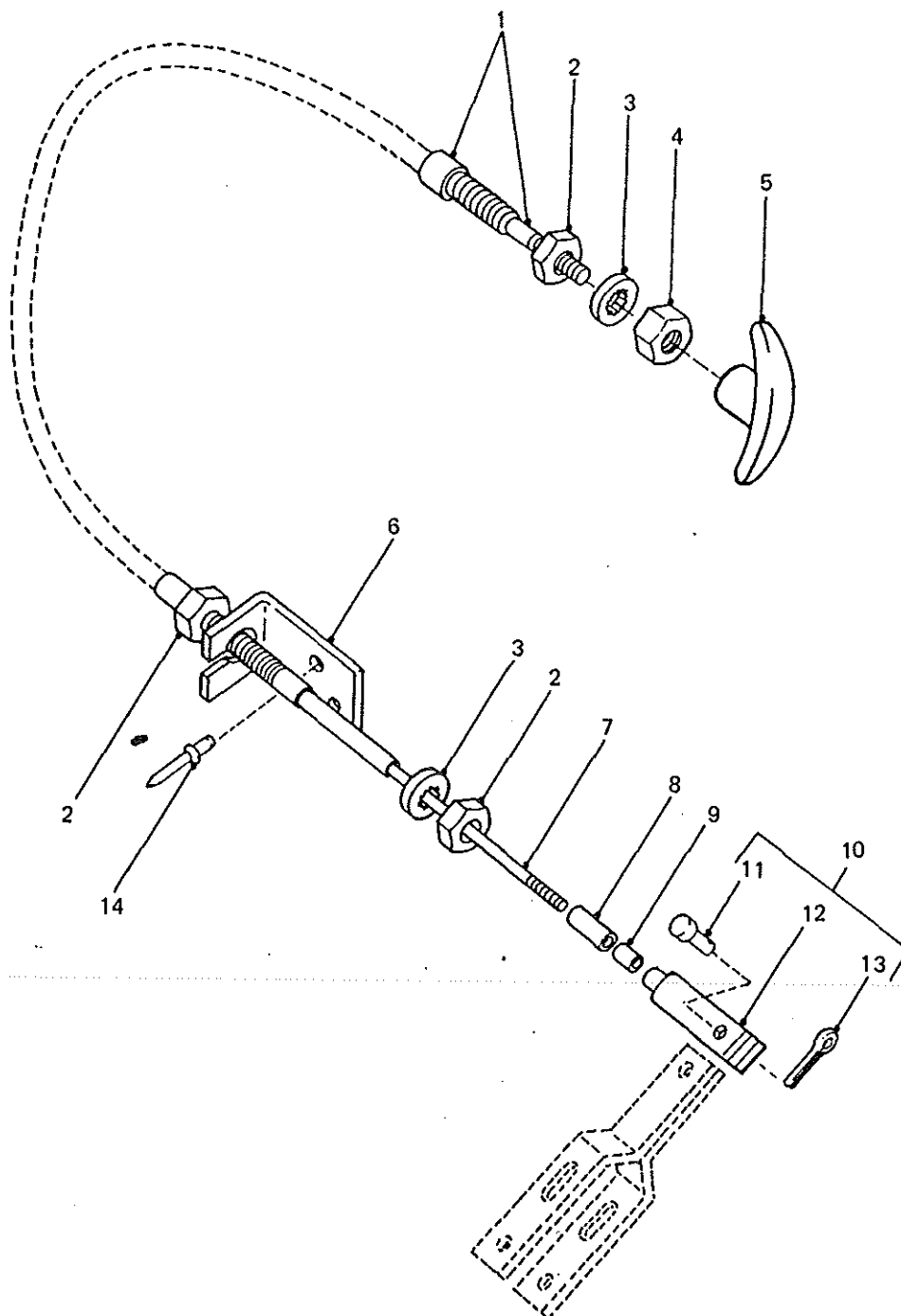


POWER TAKE-OFF AND TORQUE LIMITER

TITLE POWER TAKE-OFF AND TORQUE LIMITER

ISSUE NO: 2 REPAIR PARTS SCALE : 02189 PAGE NO: 398

* LEVEL OF REPAIR (UNIT FIELD OR BASE)

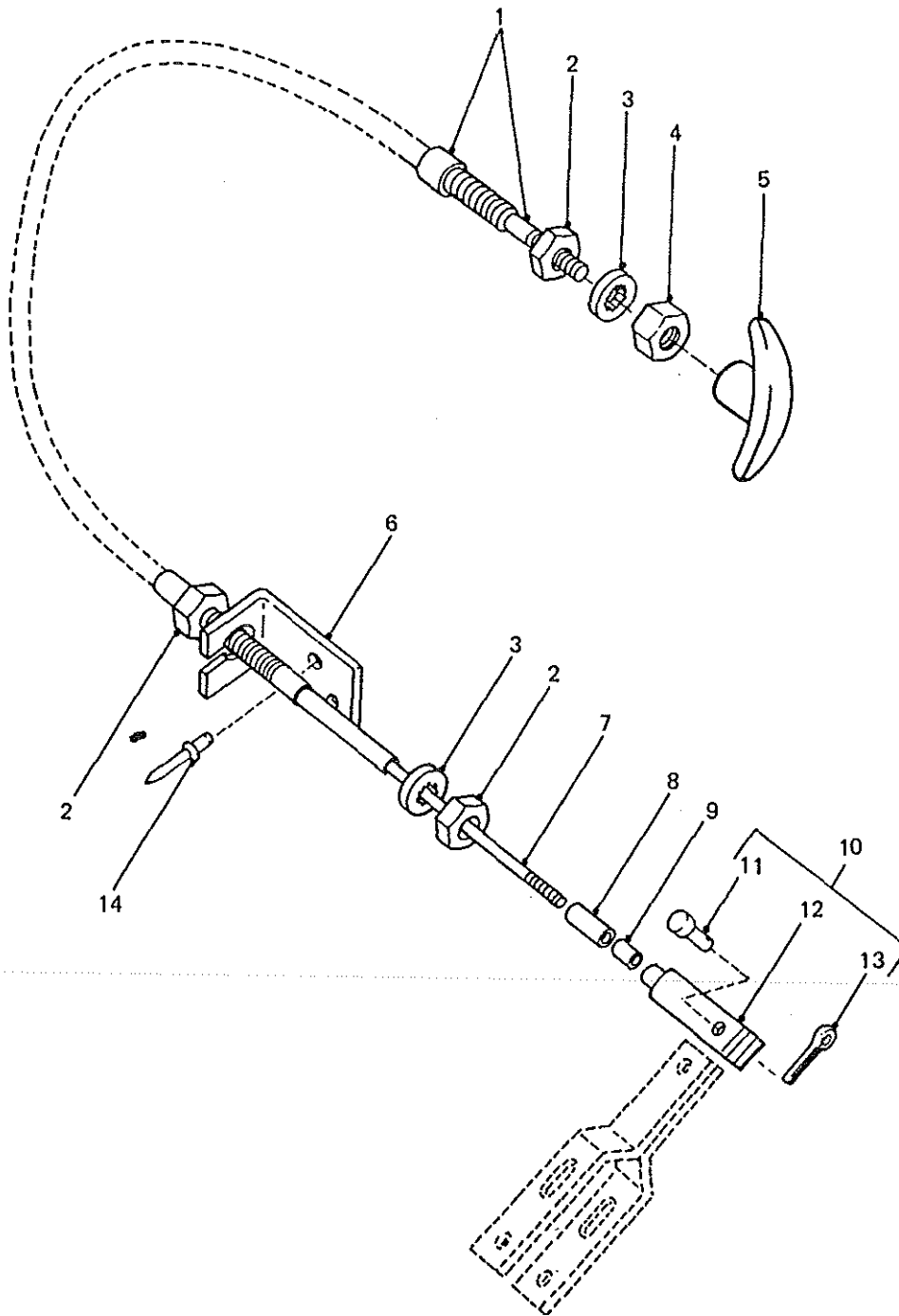


POWER TAKE-OFF CONTROL CABLE

GROUP UCC
TITLE POWER TAKE-OFF CONTROL CABLE

ITEM NO	DESIGNATION	NSN MANUFACTURER CODE/PART NO SUPPLIER CODE/PART NO	NO OFF	U I	E P	U* F* B*
001	CONTROL ASSEMBLY, PUSH-PULL, PTO CONTROL CABLE, TOTAL LENGTH 1.3M (INCLUDES UCC 002 TO UCC 005 AND UCC 007 TO UCC 009)	2590 66-128-5051 Z0974/86V02-2-1.3 Z0096/AYG3367	1			UFB
002	NUT, PLAIN, HEXAGON, UNF, 7/16 IN. STEEL, MED TENSILE, ZINC PLATED (ALSO PART OF UCC 001)	5310 66-128-5084 Z0974/175-412-004 Z0096/HYL8773	3			UFB
003	WASHER, LOCK, INTERNAL TEETH, 7/16 IN. ID, ZINC PLT (ALSO PART OF UCC 001)	5310 66-128-5110 Z0974/175-413-016 Z0096/HYL8774	2			UFB
004	NUT, PLAIN, HEXAGON, UNF, 7/16 IN. 1/2 IN. LG, 5/8 IN. WA/F (ALSO PART OF UCC 001)	5310 66-128-5085 Z0974/175-410-502 Z0096/HYL8775	1			UFB
005	KNOB, PTO CONTROL CABLE, MOULDED BLACK PLASTIC (ALSO PART OF UCC 001)	5355 66-128-5087 Z0974/165-174-014 Z0096/HYL8776	1			UFB
006	BRACKET, MOUNTING, P.T.O. CONTROL CABLE, 30 BY 3 MM GALVABOND, 2 BY 7 MM DIA. HOLES, 12 MM DIA. SLOTTED HOLE	Z0096/AYG3514 /NIL	1			
007	CABLE, INNER, 44.66 IN. LENGTH (ALSO PART OF UCC 001)	ZV678/160-673 /NIL	1			
008	BOOT, MOULDED RUBBER, DUST EXCLUDER, OUTER CABLE, 30 MM LENGTH, 9.5 MM O.D., 0.5 MM THICKNESS (USE UCC 001)	/NIL /NIL	1			
009	BOOT, MOULDED RUBBER, DUST EXCLUDER, INNER CABLE, 13 MM LENGTH, 10.5 MM O.D. (USE UCC 001)	/NIL /NIL	1			
010	YOKE ASSEMBLY (INCLUDES UCC 011 TO UCC 013)	Z0096/MYH3322 /NIL	1			
011	PIN, STRAIGHT, HEADED, 6 MM DIA BY 23 MM LG (ALSO PART OF UCC 010)	5315 66-128-5107 U1030/PC106291 Z0096/PC106291	1			UFB
ISSUE NO: 2 REPAIR PARTS SCALE : 02189 PAGE NO: 399						

* LEVEL OF REPAIR (UNIT FIELD OR BASE)

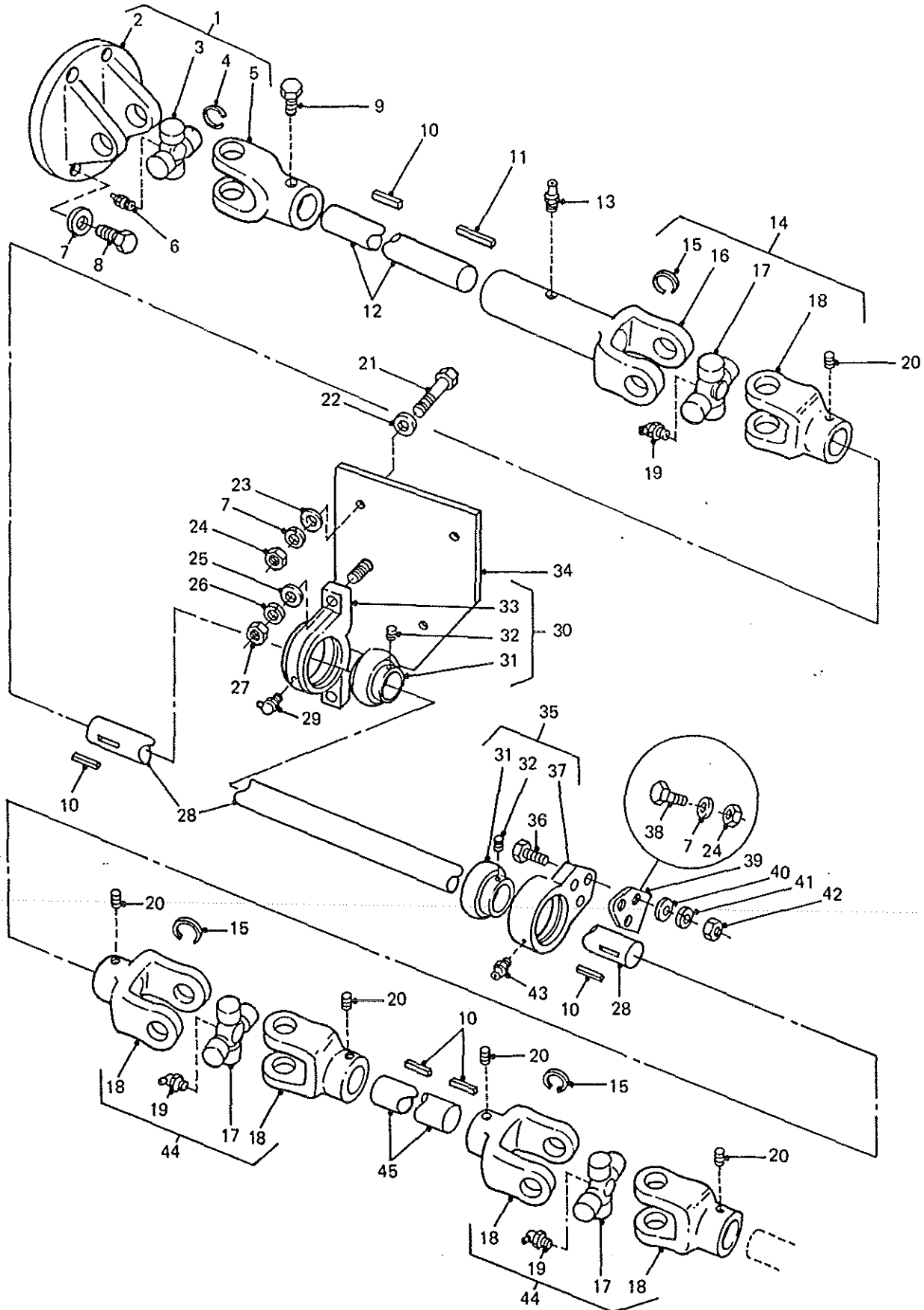


POWER TAKE-OFF CONTROL CABLE

GROUP UCC
 TITLE POWER TAKE-OFF CONTROL CABLE

ITEM NO	DESIGNATION	NSN MANUFACTURER CODE/PART NO SUPPLIER CODE/PART NO	NO OFF I	U O I	E X P	U* F* B*
012	YOKE, 10-32 UNF THREAD, 19 MM THREAD LENGTH, 7 MM BETWEEN FORKS (USE UCC 010)	/NIL /NIL	1			
013	PIN, COTTER, 1.5 MM BY 12 MM LG (ALSO PART OF UCC 010)	5315 66-128-5106 U1030/PS103121 Z0096/PS103121	1			UFB
014	RIVET, BLIND, BRACKET TO FRONT DOOR	5320 66-128-4656 U1030/AFU1350 Z0096/AFU1350	2EA		X	UFB
ISSUE NO: 2 REPAIR PARTS SCALE : 02189 PAGE NO: 400						

* LEVEL OF REPAIR (UNIT FIELD OR BASE)



WINCH DRIVE LINE

GROUP UCD
TITLE WINCH DRIVE LINE

ITEM NO	DESIGNATION	NSN MANUFACTURER CODE/PART NO SUPPLIER CODE/PART NO	NO OFF	U O I	E X P	U* F* B*
001	JOINT ASSEMBLY, UNIVERSAL (INCLUDES UCD 002 TO UCD 006)	Z0096/MYH3211 /NIL	1			
002	FLANGE, 4 HOLE, 69.85 MM PITCH CIRCLE DIA. (ALSO PART OF UCD 001)	Z3823/1-2-39 Z0096/HYL8761	1			
003	SPIDER, UNIVERSAL JOINT (ALSO PART OF UCD 001)	3040 66-075-2386 Z0025/KSA64 Z0096/HYM469	1			UFB
004	RING, RETAINING, INTERNAL EXPANDING, 15/16 IN. DIA, 0.05IN. THK (ALSO PART OF UCD 001)	5365 66-128-5080 U1030/CR110245 Z0096/HYL8765	4			UFB
005	YOKE, 3/4 IN. BORE DIA., 3/16 IN. KEYWAY (ALSO PART OF UCD 001)	Z3823/K1-4-A6493 Z0096/HYL8762	1			
006	FITTING, LUBRICATION, STRAIGHT (ALSO PART OF UCD 001)	4730 66-128-5071 Z4769/109/6 /NIL	1			UFB
007	WASHER, LOCK, SPRING, STEEL, ZINC PLATED, 8 MM ID, 14.85 MM OD, 2 MM THK	5310 99-138-9227 U1030/WL108001 Z0096/WL108001	9	EA	X	UFB
008	SCREW, MACHINE, ISO METRIC, STEEL, HEX HD, ZINC PLATED, 8 MM BY 20 MM LG	5305 99-122-5366 U1030/SH108201 Z0096/SH108201	4	EA	X	UFB
009	SCREW, MACHINE, MEDIUM TENSILE STEEL, UNC, 3/8 IN. HEX HD	5305 66-128-5114 Z3823/508-48 Z0096/HYL8785	1			UFB
010	KEY, MACHINE, STEEL, ZINC PLATED, 6.4 MM BY 6.4 MM BY 7.6 MM LG (ALSO PART OF UCD 012, UCD 028 AND UCD 045)	5315 66-128-5841 Z2893/T2893 Z0096/HYL8862	5			UFB
011	KEY, MACHINE, STEEL, ZINC PLATED, 6.4 MM BY 6.4 MM BY 2.6 MM LG (ALSO PART OF UCD 012)	5315 66-128-5842 Z4820/T2894 Z0096/HYL8863	1			UFB
012	SHAFT, STRAIGHT, WINCH DRIVE, REAR, STEEL, 18.9 MM DIA, 4 70.0 MM LG (INCLUDES UCD 010 - 1 OFF AND UCD 011 - 1 OFF, ALSO PART OF UCD 9001)	3040 66-128-5945 Z0096/AYG8175 /NIL	1			FB

ISSUE NO:

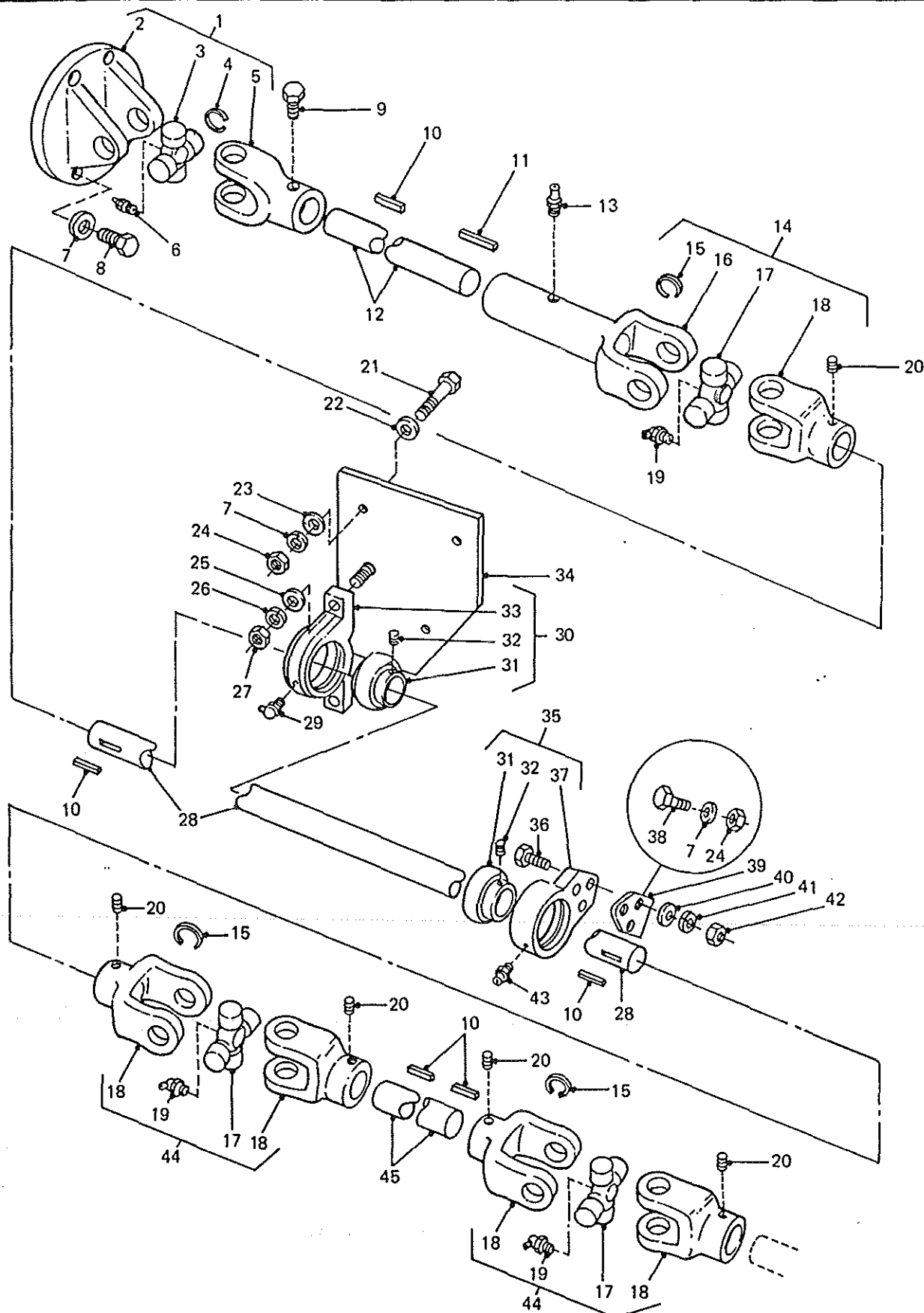
REPAIR PARTS SCALE :

PAGE NO:

* LEVEL OF REPAIR (UNIT FIELD OR BASE)

02189

401

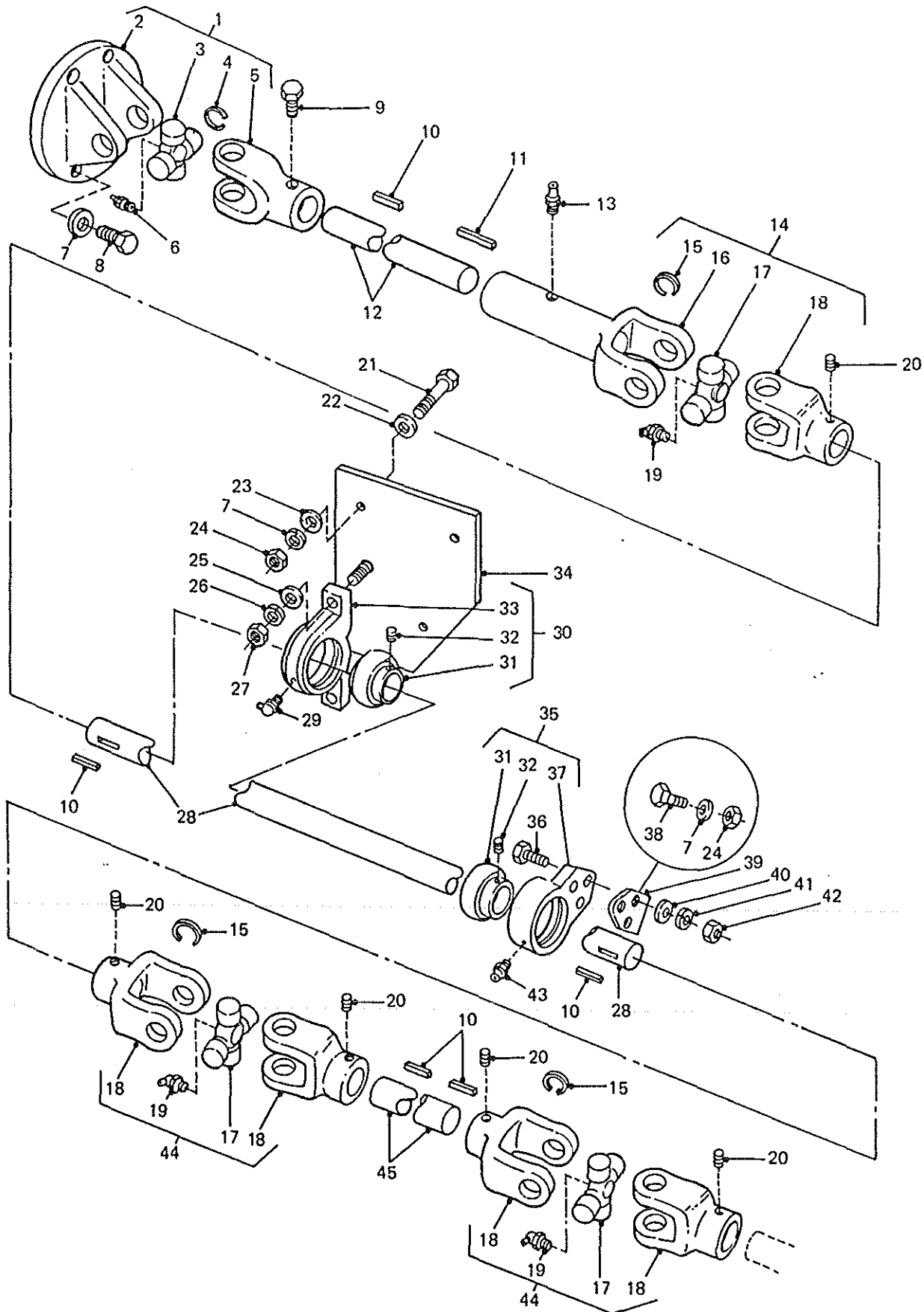


WINCH DRIVE LINE

GROUP UCD
TITLE WINCH DRIVE LINE

ITEM NO	DESIGNATION	NSN MANUFACTURER CODE/PART NO SUPPLIER CODE/PART NO	NO OFF	U I	E P	U* F* B*
013	FITTING, LUBRICATION, STRAIGHT, 3/8 IN. UNC THD	4730 66-128-5069 Z4820/T218 Z0096/HYL8788	1			UFB
014	JOINT ASSEMBLY, UNIVERSAL (INCLUDES UCC 015 TO UCC 019, ALSO PART OF UCD 9001)	Z0096/AYG8588 /NIL	1			
015	CIRCLIP, EXTERNAL CONTRACTING, 15/16 IN. DIA., 1/16 IN. THICKNESS (USE UCD 014 AND UCD 044)	/NIL /NIL	4			
016	YOKE, 3/4 IN. BORE DIA., 3/16 IN. KEYWAY (ALSO PART OF UCD 014)	Z4820/T2827 Z0096/HYL8766	1			
017	PARTS KIT, UNIVERSAL JOINT, PERENTIE WINCHDRIVE SHAFT (ALSO PART OF UCD 014 AND UCD 044)	2520 66-128-5053 Z4820/T1429 Z0096/HYL8764	3			UFB
018	YOKE, 3/4 IN. BORE DIA., 3/16 IN. KEYWAY (ALSO PART OF UCD 014 AND UCD 044)	Z4820/T2826 Z0096/HYL8763	5			
019	FITTING, LUBRICATION, 45 DEG, 1/8 IN. NPT, 27 TP1 (ALSO PART OF UCD 014 AND UCD 044)	4730 66-128-5070 U1030/LN050031 Z0096/HYL8767	3			UFB
020	SETSCREW, STEEL, UNC, 3/8 IN. BY 1/2 IN. LG, HEX DRIVE, CUP POINT	5305 66-128-5115 Z4820/T2825 Z0096/HYL8790	5			UFB
021	BOLT, HEX. HEAD, PRECISION, 8 MM COARSE THREAD, 200 MM LENGTH, ZINC PLATED	U1030/BH108201 Z0096/BH108201	3			
022	WASHER, FLAT, ISO, STEEL, RD., ZINC PLATED, 8 MM I.D. BY 17 MM O.D. BY 1.6 MM THK. K0195 BS4320-1968	U1030/WA108051 Z0096/GHF301	3			
023	WASHER, LARGE O.D., NORMAL THICKNESS, 8 MM I.D, ZINC PLATED	U1030/WC108051 Z0096/WC108051	2			
024	NUT, HEX. NORMAL, 8 MM COARSE THREAD, STEEL, MEDIUM TENSILE ZINC PLATED	U1030/NH108041 Z0096/JLM9688	5			
ISSUE NO: 2 REPAIR PARTS SCALE : 02189 PAGE NO: 402						

* LEVEL OF REPAIR (UNIT FIELD OR BASE)

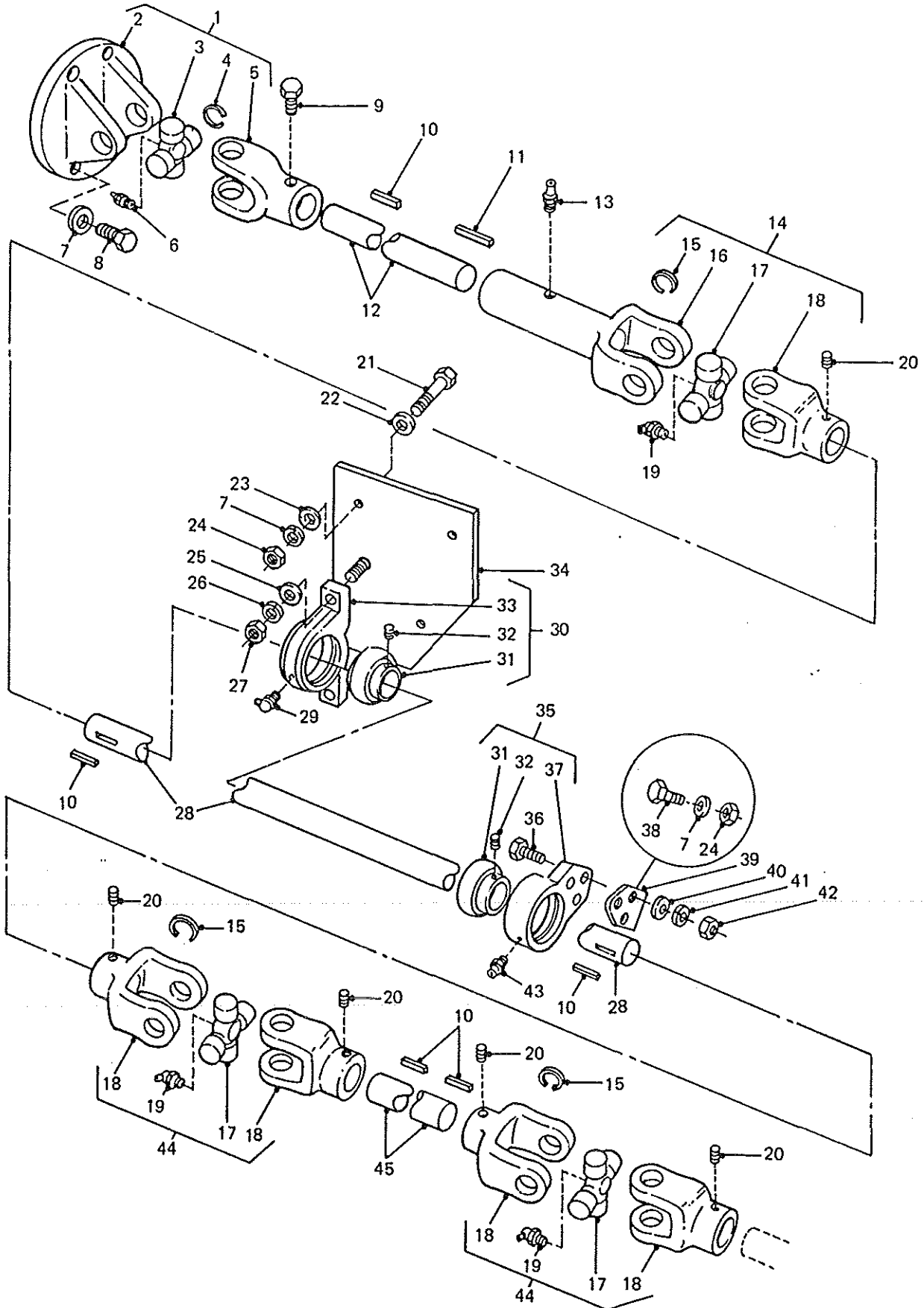


WINCH DRIVE LINE

GROUP UCD
TITLE WINCH DRIVE LINE

ITEM NO	DESIGNATION	NSN MANUFACTURER CODE/PART NO SUPPLIER CODE/PART NO	NO OFF	U I	E P	U* F* B*
025	WASHER, FLAT, RD, STEEL, 12 MM NOM BOLT SIZE, 24 MM OD, 2.50 MM THK	5310 99-122-6477 U1030/WA112081 Z0096/WA112081	2	EA	X	UFB
026	WASHER, LOCK, SINGLE COIL, RECT SECTION, 12 MM ID, ZINC PLT	5310 66-128-5111 U1030/WL112001 Z0096/WL112001	2			UFB
027	NUT, PLAIN, HEXAGON, STEEL, ISO M, 12 MM, COARSE THD, MEDIUM TENSILE, ZINC PLATED	5310 66-128-5086 U1030/NH112041 Z0096/NH112041	2			UFB
028	SHAFT, WINCH DRIVE, INTERMEDIATE, 638 MM LENGTH, 3/4 IN. DIA., STEEL (INCLUDES UCD 010 - 2 OFF, ALSO PART OF UCD 9001)	Z0096/HYG1725 /NIL	1			
029	FITTING, LUBRICATION, 90 DEG, 1/8 IN. NPT, 1 MM PITCH (ALSO PART OF UCD 030)	4730 66-128-5072 Z1426/0427-1709 Z0096/HYL8792	1			UFB
030	BEARING UNIT, BALL. PILLOW BLOCK, BALL, STEEL, SELF ALIGNING. (INCLUDES UCD 029, UCD 031, UCD 032 AND UCD 033)	3130 66-128-5123 ZB888/UCP204-12 Z0096/HYG2494	1			UFB
031	BEARING, BALL, ANNULAR, WINCH DRIVE SHAFT, 3/4 IN. ID (ALSO PART OF UCD 030 AND UCD 035)	3110 66-128-5054 ZB888/UC204-12 Z0096/HYL8793	2			UFB
032	SETSCREW, STEEL, METRIC, 5 MM BY 7 MM LG, HEX DRIVE, DOME POINT (ALSO PART OF UCD 030 AND UCD 035)	5305 66-128-5116 Z1426/01955507 Z0096/HYL8794	2			UFB
033	BLOCK, PILLOW, BEARING ASSEMBLY (USE UCD 030)	/NIL /NIL	1			
034	BRACKET, MOUNTING, BEARING ASSEMBLY, STEEL, COMPLETE WITH 2 BY 12 MM STUDS, SPECIAL	Z0096/HYG1729 /NIL	1			
035	BEARING UNIT. BALL, DROP BLOCK, 19 MM I.D., 3 MOUNTING HOLES 10 MM DIA. (INCLUDES UCD 031, UCD 032, UCD 037 AND UCD 043)	3130 66-128-5124 Z0096/HYG2495 /NIL	1			UFB
ISSUE NO: 2 REPAIR PARTS SCALE : 02189 PAGE NO: 403						

* LEVEL OF REPAIR (UNIT FIELD OR BASE)



WINCH DRIVE LINE

GROUP UCD
TITLE WINCH DRIVE LINE

ITEM NO	DESIGNATION	NSN MANUFACTURER CODE/PART NO SUPPLIER CODE/PART NO	NO OFF	U I	E P	U* F* B*
036	BOLT, HEX. HEAD, PRECISION, 10 MM COARSE THREAD, 35 MM LENGTH, ZINC PLATED	U1030/BH110071 /NIL	3			
037	BLOCK, DROP, BEARING ASSEMBLY (USE UCD 035)	/NIL /NIL	1			
038	SCREW, MACHINE, ISOMETRIC, STEEL, HEX. HD., 8 MM BY 25 MM LG.	U1030/SH108251 Z0096/SH108251	2			
039	BRACKET, ANGLE, MOUNTING, BEARING ASSEMBLY, 5 MM THICKNESS, ZINC PLATED, STEEL, SPECIAL	Z0096/HYG3026 /NIL	1			
040	WASHER, FLAT, 10 MM I.D., ZINC PLATED	U1030/WA110061 Z0096/WA110061	3			
041	WASHER, LOCK, SPRING, STEEL, SINGLE TURN, ZINC PLATED, 10 MM, 15.90 MM O.D. 2.50 MM THK.	U1030/WL110001 Z0096/WL110001	3			
042	NUT, PLAIN, HEXAGON, ISO M, STEEL, ZINC PLATED, 10 MM BOLT SIZE	U1030/NH110041 Z0096/JLM9689	3			
043	FITTING, LUBRICATION, STRAIGHT, 1/8 IN. NPT, 27 TPI (ALSO PART OF UCD 035)	4730 66-128-5073 Z1426/0427-0302 Z0096/HYL8791	1			UFB
044	JOINT ASSEMBLY, UNIVERSAL (INCLUDES UCD 015 AND UCD 017 TO UCD 019, ALSO PART OF UCD 9001)	Z4820/T1428 Z0096/AYG8589	2			
045	SHAFT, WINCH DRIVE, FRONT, 190 MM LENGTH, 18.9 MM DIA., STEEL (INCLUDES UCD 010 - 2 OFF, ALSO PART OF UCD 9001)	Z0096/HYG1727 /NIL	1			
9001	KIT, DRIVE LINE, WINCH, T8000M (INCLUDES UCD 012, UCD 014, UCD 028, UCD 044 - 2 OFF AND UCD 045)	Z0096/HYG1758 /NIL	1			

ISSUE NO: 2

REPAIR PARTS SCALE : 02189

PAGE NO:

404

* LEVEL OF REPAIR (UNIT FIELD OR BASE)

INTENTIONALLY

LEFT

BLANK